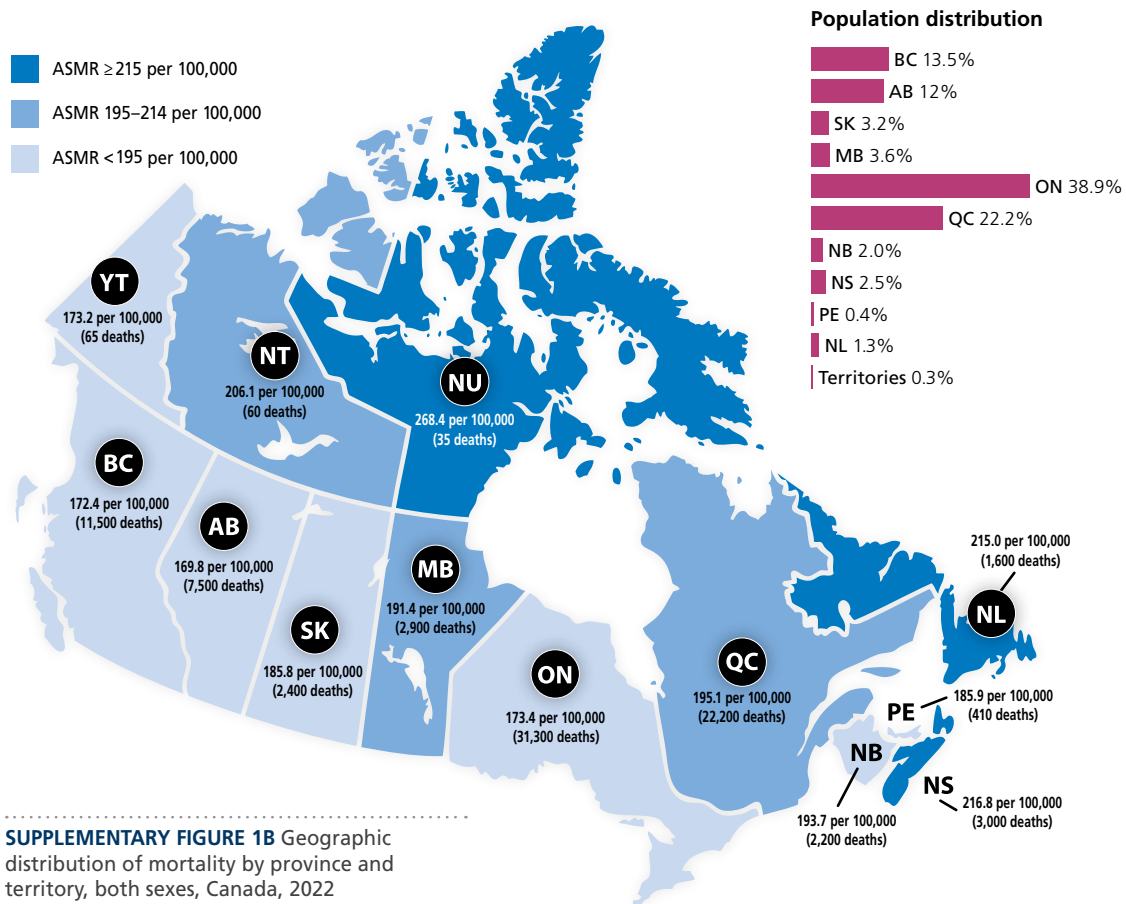


SUPPLEMENTARY FIGURE 1A Geographic distribution of incidence by province and territory, both sexes, Canada, 2022

ASIR=age-standardized incidence rate; BC=British Columbia; AB=Alberta; SK=Saskatchewan; MB=Manitoba; ON=Ontario; QC=Quebec; NB=New Brunswick; NS=Nova Scotia; PE=Prince Edward Island; NL=Newfoundland & Labrador; YT=Yukon; NT=Northwest Territories; NU=Nunavut

* Quebec is excluded because a different projection method was used for Quebec than the other regions, meaning the estimates are not comparable.



SUPPLEMENTARY FIGURE 1B Geographic distribution of mortality by province and territory, both sexes, Canada, 2022

ASMR=age-standardized mortality rate; BC=British Columbia; AB=Alberta; SK=Saskatchewan; MB=Manitoba; ON=Ontario; QC=Quebec; NB=New Brunswick; NS=Nova Scotia; PE=Prince Edward Island; NL=Newfoundland & Labrador; YT=Yukon; NT=Northwest Territories; NU=Nunavut