

**Figures:**

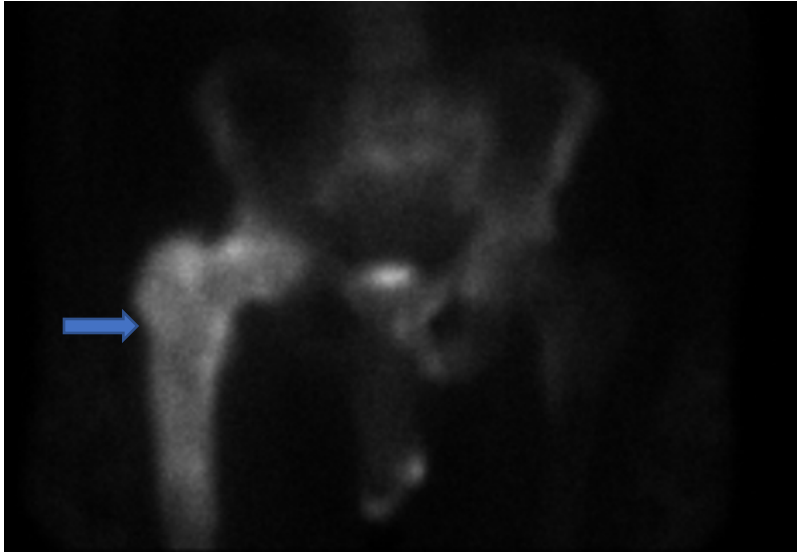


Figure 2A: Tc-99m MDP scan demonstrates increased radiotracer uptake in proximal 1/3 of the right femur (arrow). There is an increased radiotracer uptake with an appearance suggestive of degenerative disease in both hips.



Figure 2B: Tc-99m MDP scan demonstrates multiple increased radiotracer uptake in T3 vertebral body, proximal 1/3 of the right femur, and sacrum (arrows).

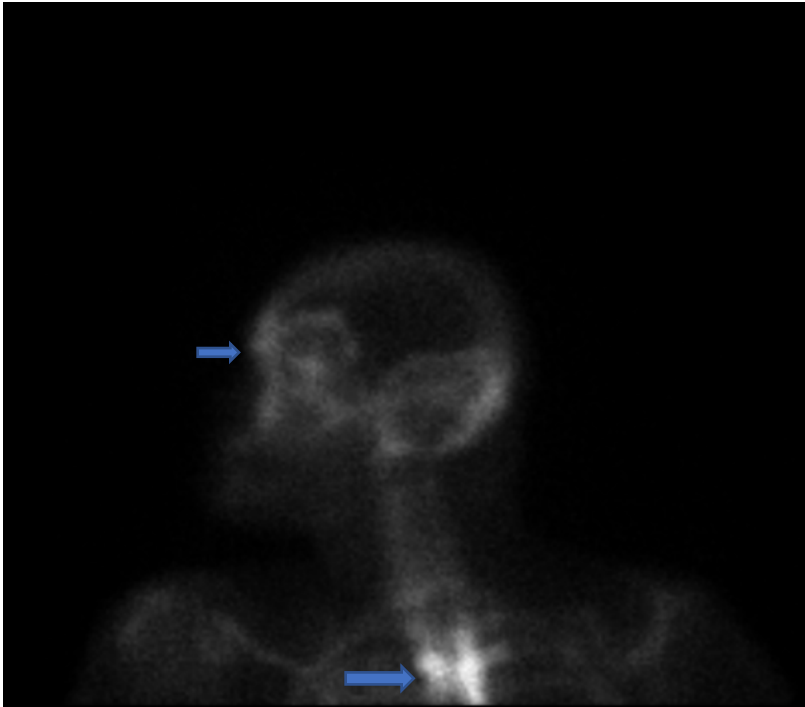


Figure 2 C: Tc-99m MDP whole body scan demonstrates multiple increased radiotracer uptake including the bilateral preorbital regions, and T3 vertebral body (arrows).