

Prevalence of lower-extremity amputation among patients with diabetes mellitus: Is height a factor?

Chin-Hsiao Tseng

The unabridged version of this article is available at www.cmaj.ca/cgi/content/full/174/3/319

ABSTRACT

Background: Taller diabetic patients are at higher risk of peripheral sensory loss than shorter diabetic patients and thus may be at increased risk of lower-extremity ulcers and amputation. In a large telephone survey, the prevalence of lower-extremity amputation among patients with diabetes mellitus was determined and the association between height and lower-extremity amputation evaluated.

Methods: Of 256 036 patients identified from hospital and clinic databases who had a diagnosis of diabetes and were seen at those institutions between 1995 and 1998, 128 572 were randomly selected to be interviewed by telephone between 1995 and 2002. Of the 93 484 patients who agreed to be interviewed, 386 were excluded (age < 18 years); this left 93 116 diabetic patients (42 970 men and 50 146 women) for inclusion in the study.

Results: Of the 93 116 patients interviewed, 3259 (3.5%) had type 1 diabetes. Lower-extremity amputation was performed in 1.7% and 0.8% of the patients with type 1 and type 2 diabetes, respectively. The prevalence of amputation did not differ significantly between men and women with type 1 diabetes but was significantly higher among men than among women with type 2 diabetes (0.9% v. 0.7%). Height (every 10-cm increment) was significantly associated with lower-extremity amputation (adjusted odds ratio [OR] 1.16, 95% confidence interval [CI] 1.03–1.32). In a subgroup of 9295 patients for whom data on fasting plasma glucose levels and dyslipidemia were available, and after additional adjustment for these 2 variables, body height remained an independent predictor of lower-extremity amputation (adjusted OR for every 10 cm of height 1.79, 95% CI 1.14–2.82).

Interpretation: Height is an independent predictor of lower-extremity amputation among patients with type 1 and type 2 diabetes mellitus.

CMAJ 2006;174(3):319-23

Taller patients with diabetes mellitus have been shown to be more susceptible than shorter diabetic patients to peripheral sensory loss.¹⁻⁷ This greater susceptibility could be due to increased vulnerability of longer nerve fibres to damage from external trauma or from the micro- or macrovascular complications of diabetes. Because peripheral sensory loss with the development of foot ulcers is the most common indication for lower-extremity amputation among diabetic patients,⁸ taller patients may be at increased risk of such a procedure. In Taiwan, although diabetes mellitus accounts for a third⁹ to half¹⁰ of all lower-extremity amputations, the procedure is much less common among Taiwanese people of shorter stature than among white people who are much taller.¹⁰ Similarly low procedure rates have been observed in other Asian populations.¹⁰ The reason for the difference in rates between ethnic groups is unknown, but height may be a factor.

The objectives of this study were to determine the prevalence of lower-extremity amputation among patients with diabetes mellitus (type 1 and type 2) and to evaluate the association between height and lower-extremity amputation, with adjustment for the potential confounding effects of age, sex, duration of diabetes, smoking status, hypertension, fasting plasma glucose level and dyslipidemia.

Methods

A full description of the methods is available in the unabridged version of this article (www.cmaj.ca/cgi/content/full/174/3/319).

In brief, the databases of 66 hospitals and clinics in every region of Taiwan were used to identify all patients seen in these institutions between 1995 and 1998 with a diagnosis of diabetes mellitus. (These databases were used because most diabetic patients in Taiwan receive medical care at such facilities.) The sample is described in detail elsewhere.^{11,12}

Of the 256 036 patients identified, a sample of 128 572 was randomly chosen. Between Mar. 1, 1995, and Apr. 30, 2002, trained interviewers administered a survey by telephone using a structured questionnaire. The information obtained included demographic data; self-reported height and weight; ethnic background of both parents; history of lower-

Table 1: Baseline characteristics of patients with diabetes mellitus who participated in the survey

Characteristic	All patients n = 93 116	Patients with type 1 diabetes n = 3 259	Patients with type 2 diabetes n = 89 857
Age, mean (SD), yr	62.0 (11.6)	56.2 (16.6)	62.2 (11.3)
Sex, male, % (no.)	46.1 (42 970)	48.2 (1 572)	46.1 (41 398)
Duration of diabetes, mean (SD), yr	7.3 (6.6)	10.3 (7.9)	7.2 (6.5)
Body height, mean (SD), cm	160.1 (7.9)	161.1 (8.2)	160.1 (7.9)
Smoking status, % (no.)			
Ever smoked	30.7 (28 599)	33.6 (1 095)	30.6 (27 504)
Never smoked	69.3 (64 517)	66.4 (2 164)	69.4 (62 353)
Ex-smoker	10.9 (10 123)	8.6 (280)	11.0 (9 843)
Current smoker	19.8 (18 476)	25.0 (815)	19.7 (17 661)
Hypertension, % (no.)	54.2 (49 287)	46.8 (1 478)	54.5 (47 809)
Lower-extremity amputation, % (no.)	0.8 (784)	1.7 (54)	0.8 (730)

Note: SD = standard deviation.

extremity amputation; initial symptoms or clinical events that led to the diagnosis of diabetes; current treatment of diabetes; history of smoking; hypertension; and family history of diabetes and hypertension. A subset of the participants who reported having visited a physician in the month before the interview were asked whether they had dyslipidemia and, if so, whether they had received treatment for it; they were also asked for the results of any fasting plasma glucose level obtained in the 3 months before the interview.

Height was categorized into quartiles. Actual and adjusted prevalences of lower-extremity amputations were calculated for each quartile. Logistic regression analyses were used to estimate the odds ratios and 95% confidence intervals for lower-extremity amputation for the various risk factors. Two models were created: the first was for all of the study subjects and adjusted for age, sex, type of diabetes, duration of diabetes, smoking status, hypertension and height. The second model was for the subgroup of patients who reported their fasting plasma glucose level and dyslipidemia status; these 2 factors were entered into the model in addition to the variables used in the first model.

The study design was approved and supported by an ad hoc ethics committee of the Department of Health of Taiwan.

Results

Of the 128 572 randomly selected subjects, 93 484 (72.7%) completed the telephone survey. The age and sex distribution of the respondents was comparable to that of the original cohort of 256 036 diabetic patients.^{11,12} A total of 368 patients were excluded because they were less than 18 years old, which left 93 116 respondents; 9295 of them reported their fasting plasma glucose level and dyslipidemia status and were included in the subgroup analysis.

Table 1 shows the baseline characteristics of the respondents. A total of 784 patients (0.8%) reported a history of

Table 2: Prevalence of lower-extremity amputation by age and sex and by type of diabetes

Age, yr	Group; % (no.) of amputations		p value
	Men	Women	
Type 1 diabetes			
< 55	1.0 (7/668)	0.3 (2/603)	> 0.1
55-64	2.8 (10/354)	2.9 (12/419)	> 0.1
≥ 65	1.6 (9/550)	2.1 (14/665)	> 0.1
All ages	1.7 (26/1 572)	1.7 (28/1 687)	> 0.1
p value	> 0.1	< 0.01	
Type 2 diabetes			
< 55	0.6 (64/11 529)	0.4 (42/10 078)	> 0.05
55-64	0.8 (94/11 654)	0.5 (83/15 289)	< 0.01
≥ 65	1.2 (219/18 215)	1.0 (228/23 092)	< 0.05
All ages	0.9 (377/41 398)	0.7 (353/48 459)	< 0.01
p value	< 0.01	< 0.01	

lower-extremity amputation. The age- and sex-specific prevalences of such amputation by type of diabetes are shown in Table 2. The prevalence increased significantly with age among men and women with type 2 diabetes, but a significant increase with age was evident only among women with type 1 diabetes. Among patients with type 2 diabetes, men were significantly more likely than women to have had a lower-extremity amputation in all age groups except the youngest (< 55 years).

Fig. 1 shows the actual and adjusted prevalences of lower-extremity amputation by height quartiles for all of the diabetic patients and for those with type 1 and type 2 diabetes. A significant increase in trends was observed ($p < 0.05$).

Fig. 2 shows the adjusted odds ratios for lower-extremity amputation among all of the subjects (model 1) and among the subgroup of respondents for whom data were available on fasting plasma glucose level and dyslipidemia (model 2). In the first model, all of the factors except for smoking status (current smoker) and sex were found to be significant (Fig. 2, top panel). In the subgroup analysis (model 2), height, duration of diabetes, smoking status (ex-smoker), hypertension and fasting plasma glucose level were significant factors (Fig. 2, bottom panel).

Interpretation

This study revealed a strong and statistically significant association between height and risk of lower-extremity amputation among diabetic patients. The association held even after adjustment for other risk factors for this type of amputation. Every additional 10 cm of height was associated with a 16% increase in the risk of amputation. In the subgroup analysis, in which adjustments were made for additional information on fasting plasma glucose level and dyslipidemia, the adjusted risk of amputation was even larger (79% for every additional 10 cm of height).

This study had several limitations. Sensory dysfunction could not be evaluated. Taller patients are known to be at increased risk of peripheral sensory loss compared with shorter patients.¹⁻⁷ The association between height and lower-extremity amputation would be underestimated if taller patients who had undergone amputation were less healthy and had more comorbidities (e.g., compression of vertebral disc space) than shorter patients who had undergone amputation. The association between height and lower-extremity amputation was stronger in the subgroup analysis that adjusted for fasting plasma glucose level and dyslipidemia than in the main analysis that did not include these 2 factors. Because the data were collected over 7 years, a healthy survivor bias may have existed. If taller patients undergoing lower-extremity amputation are at lower risk of death than shorter patients undergoing such amputation, estimates of the effects of height on amputation might be overestimated. Follow-up of the cohort to determine the incidence of lower-extremity amputation would give a more assured answer.

The association between lower-extremity amputation and weight or body mass index (BMI) was not evaluated in this study because weight and BMI change significantly under different disease conditions and nutritional states and because the weight of lost limbs in amputated patients is difficult to estimate; height, on the other hand, changes minimally and will only decrease after puberty. The significant association between height and lower-extremity amputation persisted even after adjustments for weight and BMI (data not shown).

As in previous studies in Taiwan,^{9,11,15} diabetic men were found to be at higher risk of lower-extremity amputation than their female counterparts (Table 2). However, in the present study, sex did not remain a significant factor after adjustment for the other confounding variables (Fig. 2). In fact, in another logistic regression analysis in which only sex and height were included as independent variables, only height

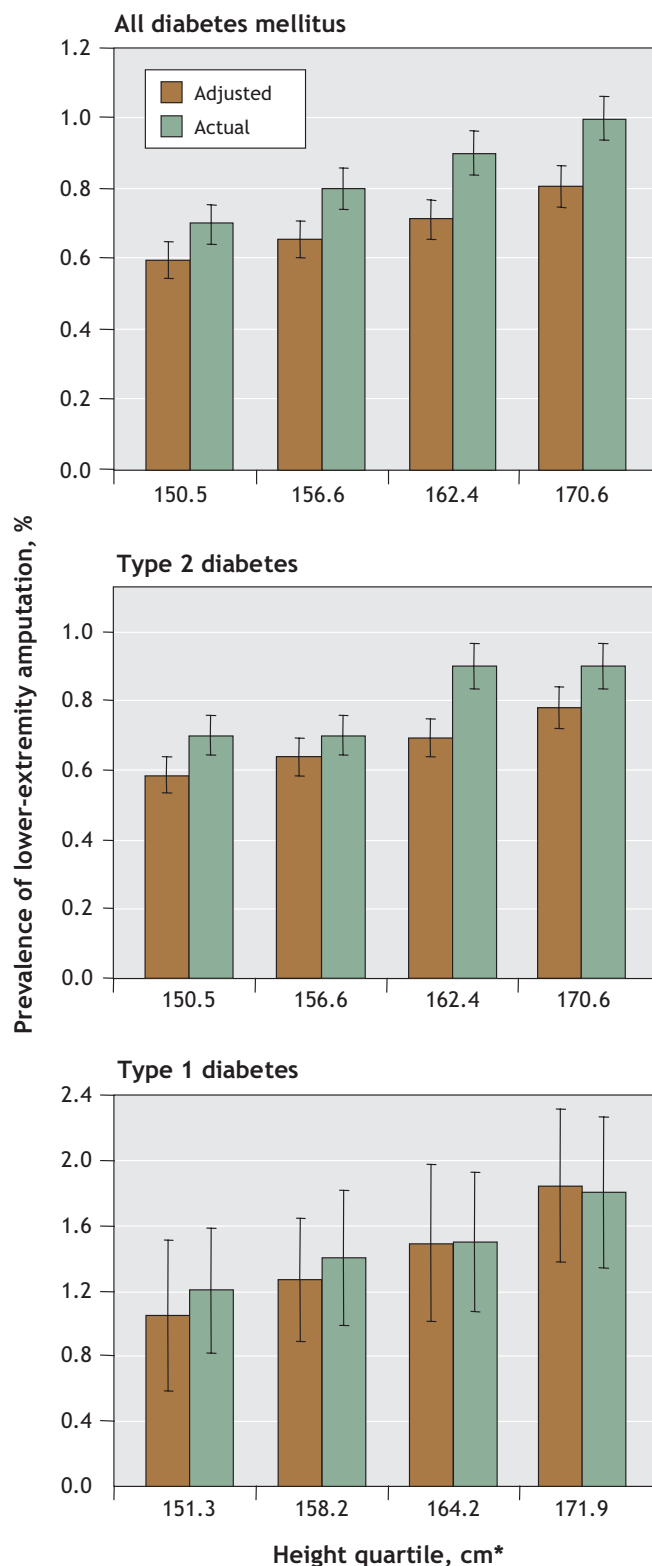


Fig. 1: Actual and adjusted prevalences of lower-extremity amputation by height quartile among patients with diabetes mellitus 18 years and older. Adjusted variables were age, sex, type of diabetes, duration of diabetes, smoking status and hypertension. Error bars = standard errors. *Values are mean heights for the respective quartiles.

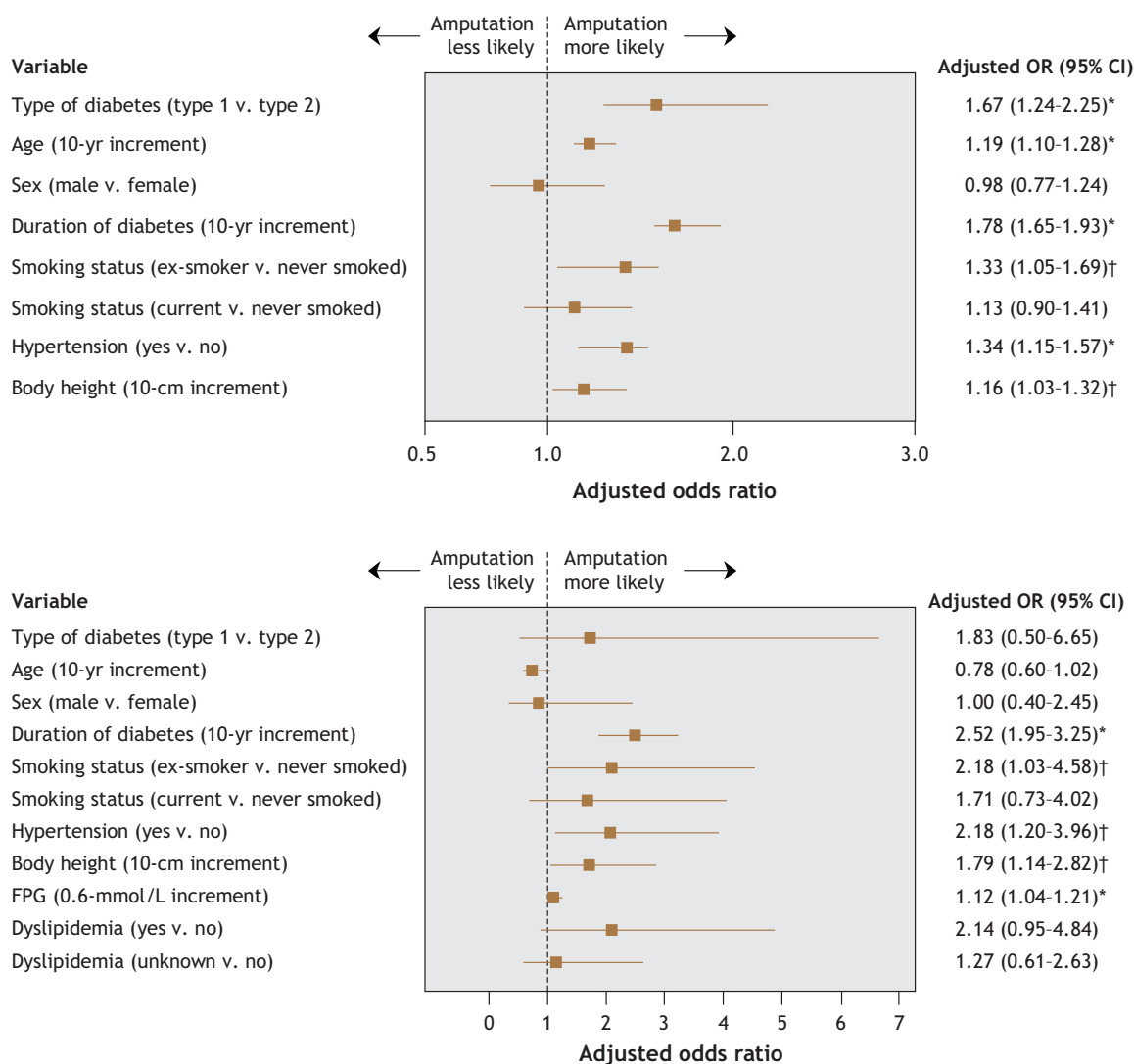


Fig. 2: Multivariate-adjusted odds ratios (ORs) and 95% confidence intervals (CIs) for lower-extremity amputation among all 93 116 diabetic patients (top panel) and among the 9295 patients for whom data of fasting plasma glucose (FPG) levels and history of dyslipidemia were available (bottom panel). * $p < 0.01$; † $p < 0.05$.

was found to be significantly associated with lower-extremity amputation (data not shown). This observation suggests that the difference in amputation prevalence between the men and women was due to a confounding effect of height.

In conclusion, height is a risk factor for lower-extremity amputation among diabetic patients. This effect appears to be independent of other known risk factors. Although the underlying mechanism could not be identified, it may be wise to pay particular attention to the early detection and treatment of leg ulcers in taller patients with diabetes.

This article has been peer reviewed.

From the Division of Endocrinology and Metabolism, Department of Internal Medicine, National Taiwan University Hospital; the National Taiwan University College of Medicine; the School of Public Health, Taipei Medical University; and the Division of Environmental Health and Occupational Medicine, National Health Research Institutes, Taipei, Taiwan

Competing interests: None declared.

Acknowledgements: The author thanks the Department of Medical Research, National Taiwan University Hospital, for providing the facilities, space and support for the related studies.

This study was supported in part by grants from the Department of Health (grant DOH89-TD-1035) and the National Science Council (grants NSC-90-2320-B-002-197, NSC-92-2320-B-002-156, NSC-93-2320-B-002-071 and NSC-94-2314-B-002-142), Taiwan.

REFERENCES

- Sosenko JM, Gadia MT, Fournier AM, et al. Body stature as a risk factor for diabetic sensory neuropathy. *Am J Med* 1986;80:1031-4.
- Gadia MT, Natori N, Ramos LB, et al. Influence of height on quantitative sensory, nerve-conduction, and clinical indices of diabetic peripheral neuropathy. *Diabetes Care* 1987;10:613-6.
- Sorensen L, Molyneux L, Yue DK. Insensate versus painful diabetic neuropathy: the effects of height, gender, ethnicity and glycaemic control. *Diabetes Res Clin Pract* 2002;57:45-51.
- Christen WG, Manson JE, Bubes V, et al. Risk factors for progression of distal symmetric polyneuropathy in type 1 diabetes mellitus. Sorbinil Retinopathy Trial

- Research Group. *Am J Epidemiol* 1999;150:1142-51.
5. Adler AI, Boyko EJ, Ahroni JH, et al. Risk factors for diabetic peripheral sensory neuropathy. Results of the Seattle Prospective Diabetic Foot Study. *Diabetes Care* 1997;20:1162-7.
 6. Maser RE, Laudadio C, DeCherney GS. The effects of age and diabetes mellitus on nerve function. *J Am Geriatr Soc* 1993;41:1202-4.
 7. Robinson LR, Stolov WC, Rubner DE, et al. Height is an independent risk factor for neuropathy in diabetic men. *Diabetes Res Clin Pract* 1992;16:97-102.
 8. Birke JA, Patout CA Jr, Foto JG. Factors associated with ulceration and amputation in the neuropathic foot. *J Orthop Sports Phys Ther* 2000;30:91-7.
 9. Tseng CH, Tai TY, Chen CJ, et al. Ten-year clinical analysis of diabetic leg amputees. *J Formos Med Assoc* 1994;93:388-92.
 10. Global Lower Extremity Amputation Study Group. Epidemiology of lower extremity amputation in centres in Europe, North America and East Asia. *Br J Surg* 2000;87:328-37.
 11. Tseng CH. Mortality and causes of death in a national sample of diabetic patients in Taiwan. *Diabetes Care* 2004;27:1605-9.
 12. Tseng CH, Chong CK, Sheu JJ, et al. Prevalence and risk factors for stroke in type 2 diabetic patients in Taiwan: a cross-sectional survey of a national sample by telephone interview. *Diabet Med* 2005;22:477-82.
 13. Lin T, Chou P, Lai MS, et al. Direct costs-of-illness of patients with diabetes mellitus in Taiwan. *Diabetes Res Clin Pract* 2001;54(Suppl 1):S43-6.
 14. Lee J. Covariance adjustment of rates based on the multiple logistic regression model. *J Chronic Dis* 1981;34:415-26.
 15. Tseng CH, Tai TY, Chong CK, et al. Mortality in diabetic patients after lower extremity amputations. *J Formos Med Assoc* 1994;93:842-8.

Correspondence to: Dr. Chin-Hsiao Tseng, Department of Internal Medicine, National Taiwan University Hospital, No. 7 Chung-Shan South Rd., Taipei, Taiwan; fax 02 2937-8201; ccktsh@ms6.hinet.net

Editor's take

- Peripheral sensory loss with foot ulcer in diabetic patients is the most common indication for lower-extremity amputation. Since taller diabetic patients are at greater risk of peripheral sensory loss than are shorter diabetic patients, are they also at greater risk of foot ulcers and subsequent amputation?
- In a survey of 93 116 people in Taiwan with diabetes, height was found to be a strong predictor of lower-extremity amputation, even after adjustment for other known risk factors such as age and sex. In the whole study population, every 10-cm increase in height was associated with a 16% increase in risk of amputation. In the subgroup of patients for whom data on fasting plasma glucose levels and dyslipidemia were available, the risk of amputation was even greater (79% for every 10-cm increase in height).

Implications for practice: Taller patients with diabetes appear to be at increased risk of lower-extremity amputation and should be monitored closely for early signs of peripheral sensory loss.



Online manuscript submissions and peer review

NOW AVAILABLE AT **CMAJ**

<http://mc.manuscriptcentral.com/cmaj>