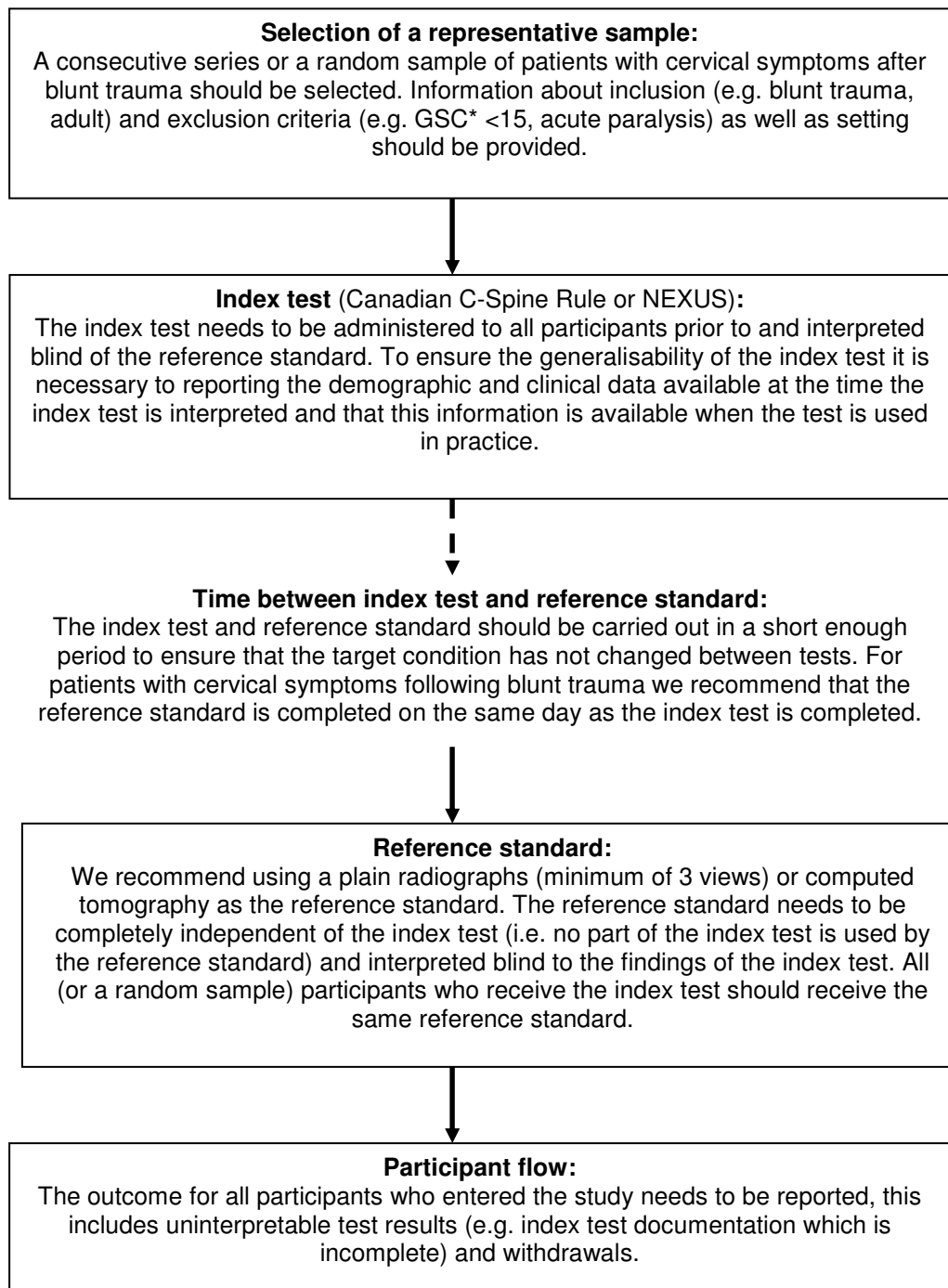


**Appendix 2 (as supplied by authors): Ideal diagnostic test accuracy flow chart for the Canadian C-Spine Rule and NEXUS**



Appendix to: Michaleff ZA, Maher CG, Verhagen AP, et al. Accuracy of the Canadian C-spine rule and NEXUS to screen for clinically important cervical spine injury in patients following blunt trauma: a systematic review. *CMAJ* 2012. DOI:10.1503/cmaj.120675. Copyright © 2012 Canadian Medical Association or its licensors.