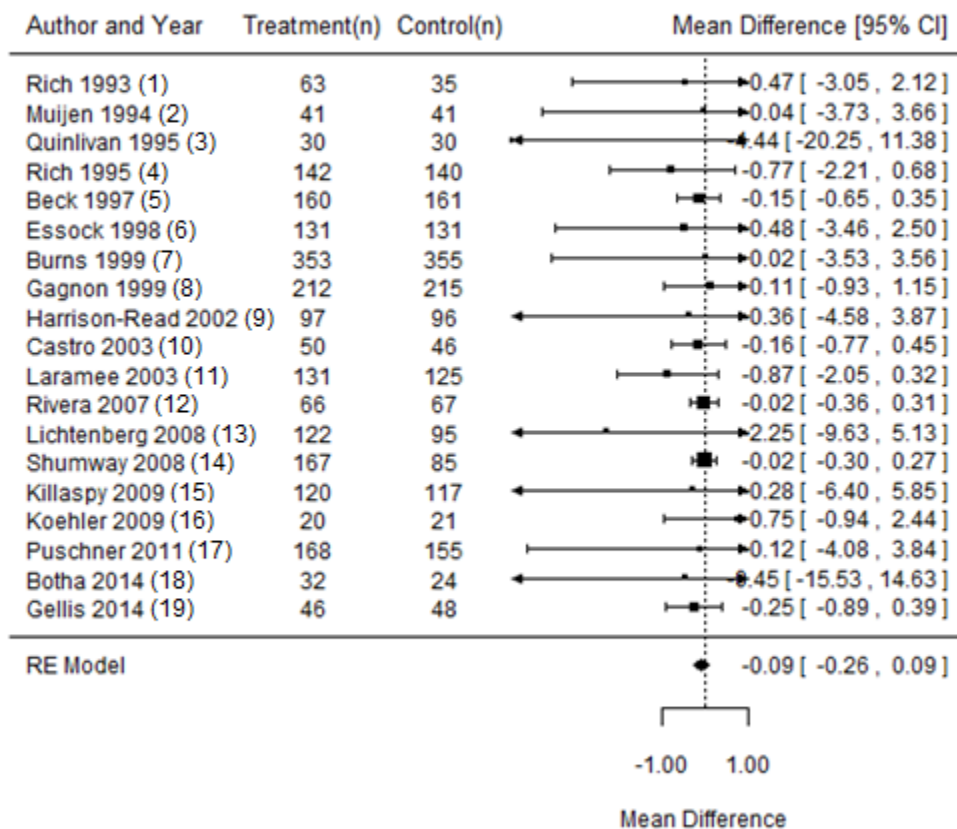


Appendix 10 (as supplied by the authors): Effect of Quality Improvement Strategies Relative to Control in Terms of Mean Number of Days for Admissions per Patient per Month



Abbreviations: CI, Confidence interval; n, number, RE, Random effects.

$I^2 = 0\%$

References

1. Rich MW, Vinson JM, Sperry JC, et al. Prevention of readmission in elderly patients with congestive heart failure: results of a prospective, randomized pilot study. *J Gen Intern Med* 1993;8:585-90.
2. Muijen M, Cooney M, Strathdee G, et al. Community psychiatric nurse teams: intensive support versus generic care. *Br J Psychiatry* 1994;165:211-7.
3. Quinlivan R, Hough R, Crowell A, et al. Service utilization and costs of care for severely mentally ill clients in an intensive case management program. *Psychiatr Serv* 1995;46:365-71.
4. Rich MW, Beckham V, Wittenberg C, et al. A multidisciplinary intervention to prevent the readmission of elderly patients with congestive heart failure. *N Engl J Med* 1995;333:1190-5.
5. Beck A, Scott J, Williams P, et al. A randomized trial of group outpatient visits for chronically ill older HMO members: the Cooperative Health Care Clinic. *J Am Geriatr Soc* 1997;45:543-9.
6. Essock SM, Frisman LK, Kontos NJ. Cost-effectiveness of assertive community treatment teams. *Am J Orthopsychiatry* 1998;68:179-90.
7. Burns T, Creed F, Fahy T, et al. Intensive versus standard case management for severe psychotic illness: a randomised trial. UK 700 Group. *Lancet* 1999;353:2185-9.
8. Gagnon AJ, Schein C, McVey L, et al. Randomized controlled trial of nurse case management of frail older people. *J Am Geriatr Soc* 1999;47:1118-24.
9. Harrison-Read P, Lucas B, Tyrer P, et al. Heavy users of acute psychiatric beds: randomized controlled trial of enhanced community management in an outer London borough. *Psychol Med* 2002;32:403-16.
10. Castro M, Zimmermann NA, Crocker S, et al. Asthma intervention program prevents readmissions in high healthcare users. *Am J Respir Crit Care Med* 2003;168:1095-9.
11. Laramee AS, Levinsky SK, Sargent J, et al. Case management in a heterogeneous congestive heart failure population: a randomized controlled trial. *Arch Intern Med* 2003;163:809-17.
12. Rivera JJ, Sullivan AM, Valenti SS. Adding consumer-providers to intensive case management: Does it improve outcome? *Psychiatr Serv* 2007;58:802-9.
13. Lichtenberg P, Levinson D, Sharshevsky Y, et al. Clinical case management of revolving door patients — a semi-randomized study. *Acta Psychiatr Scand* 2008;117:449-54.
14. Shumway M, Boccellari A, O'Brien K, et al. Cost-effectiveness of clinical case management for ED frequent users: results of a randomized trial. *Am J Emerg Med* 2008;26:155-64.
15. Killaspy H, Kingett S, Bebbington P, et al. Randomised evaluation of assertive community treatment: 3-year outcomes. *Br J Psychiatry* 2009;195:81-2.
16. Koehler BE, Richter KM, Youngblood L, et al. Reduction of 30-day postdischarge hospital readmission or emergency department (ED) visit rates in high-risk elderly medical patients through delivery of a targeted care bundle. *J Hosp Med* 2009;4:211-8.
17. Puschner B, Steffen S, Volker KA, et al. Needs-oriented discharge planning for high utilisers of psychiatric services: multicentre randomised controlled trial. *Epidemiol Psychiatr Sci* 2011;20:181-92.

18. Botha UA, Koen L, Galal U, et al. The rise of assertive community interventions in South Africa: a randomized control trial assessing the impact of a modified assertive intervention on readmission rates; a three year follow-up. *BMC Psychiatry* 2014;14:56.
19. Gellis ZD, Kenaley BL, Ten Have T. Integrated telehealth care for chronic illness and depression in geriatric home care patients: the Integrated Telehealth Education and Activation of Mood (I-TEAM) study. *J Am Geriatr Soc* 2014;62:889-95.