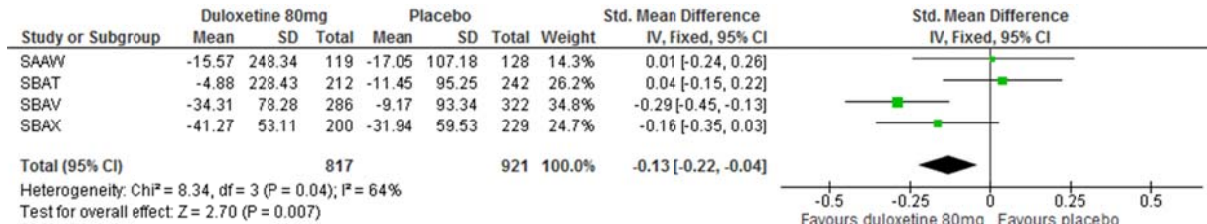
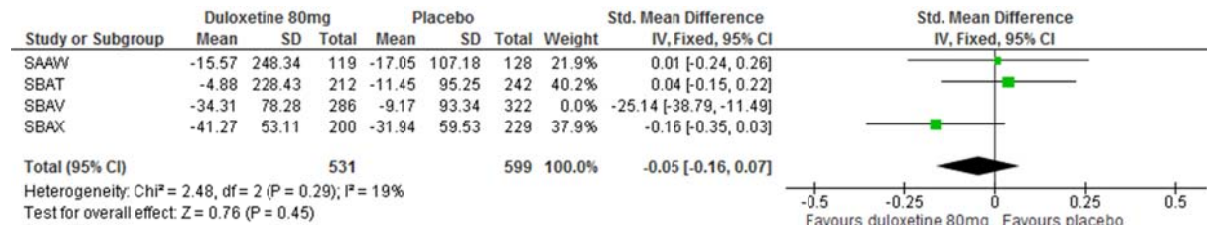


Appendix 1 (as supplied by the authors): Forest plots for various analyses of benefits, harms and sensitivity analyses

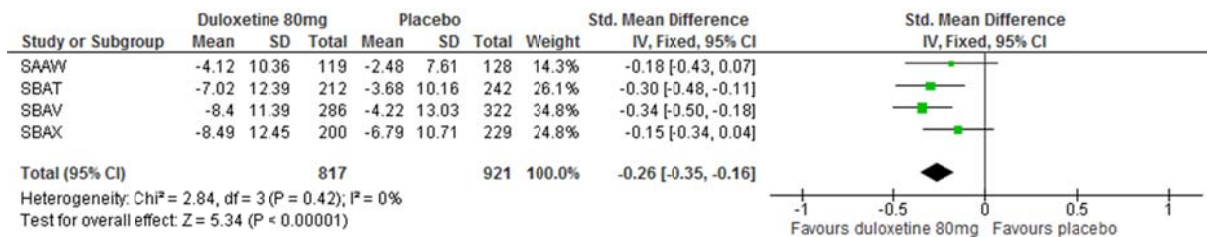
Forest plot (standardized mean difference) of percentage change from baseline in weekly incontinence episodes



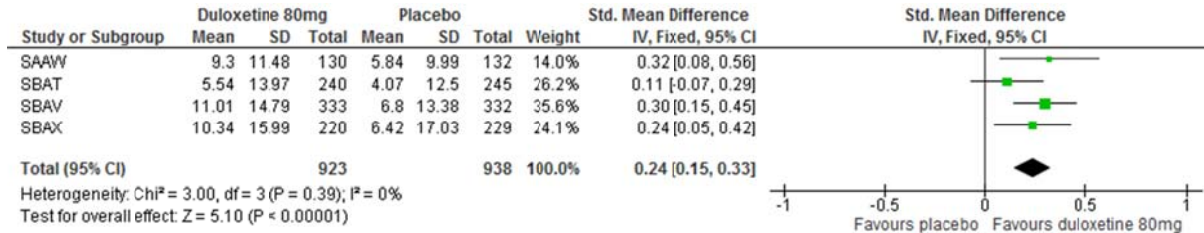
Forest plot (standardized mean difference) of sensitivity analysis of percentage change from baseline in weekly incontinence episodes



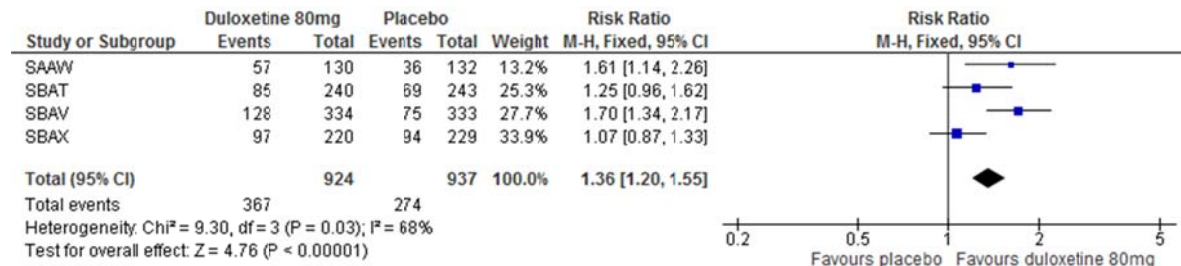
Forest plot (standardized mean difference) of numerical change from baseline in weekly incontinence episodes



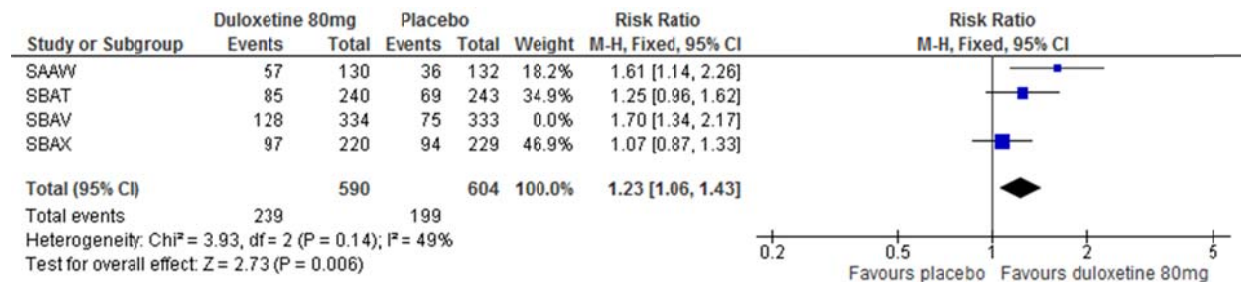
Forest plot (standardized mean difference) of change in Incontinence Quality of Life total score



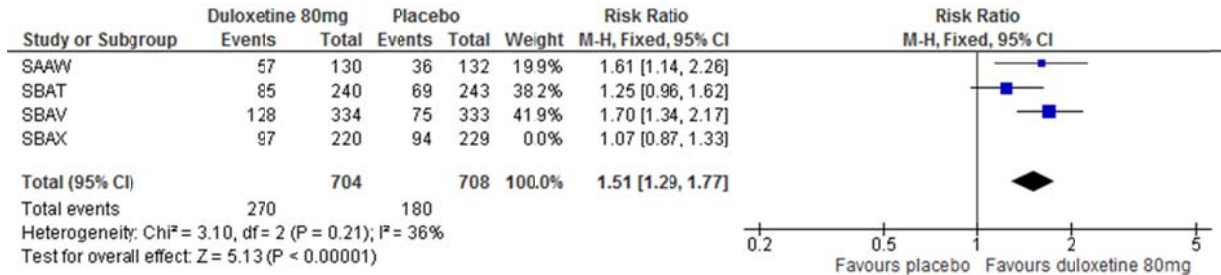
Forest plot (risk ratio) of Patient Global Impression of Improvement (PGI-I) responses of "much better or very much better".



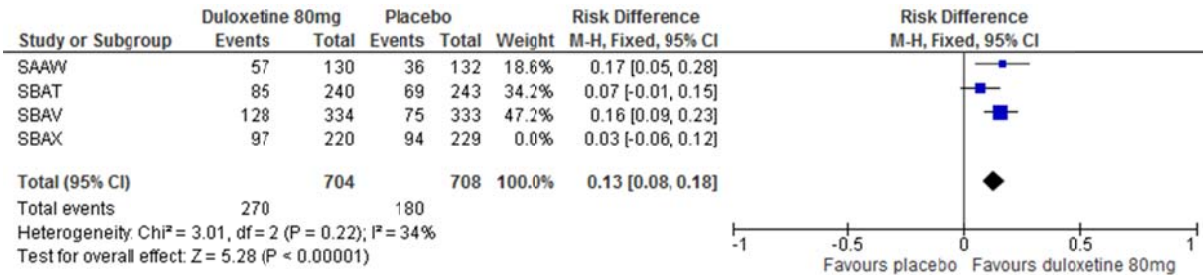
Forest plot (risk ratio) of sensitivity analysis 1 of PGI-I responses of "much better or very much better".



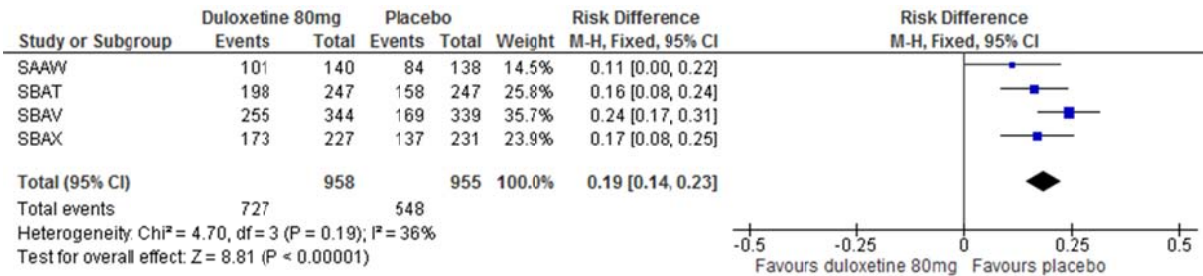
Forest plot (risk ratio) of sensitivity analysis 2 of PGI-I responses of "much better or very much better".



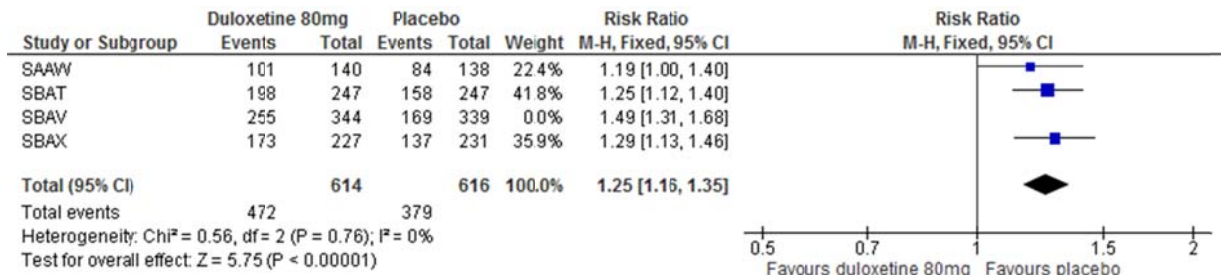
Forest plot (risk difference) of sensitivity analysis 2 of PGI-I responses of "much better or very much better".



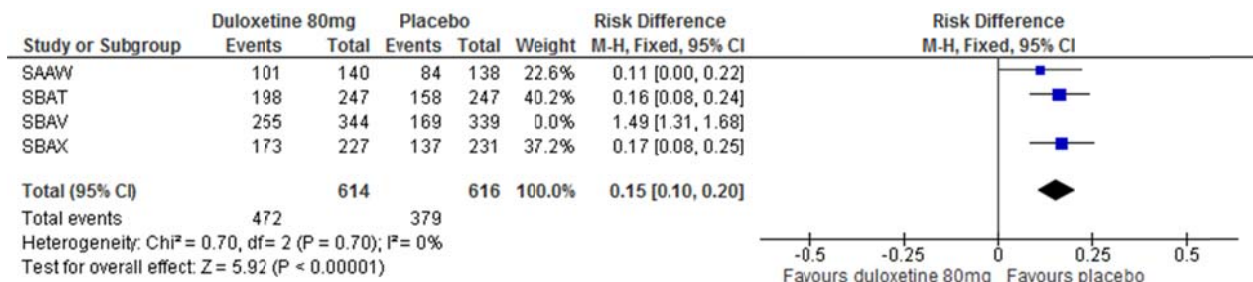
Forest plot (risk difference) of experiencing at least one treatment emergent adverse event



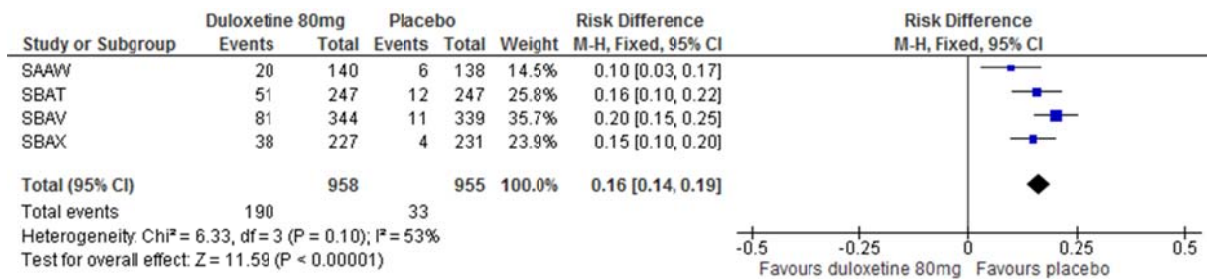
Forest plot (risk ratio) of sensitivity analysis of experiencing at least one treatment emergent adverse event



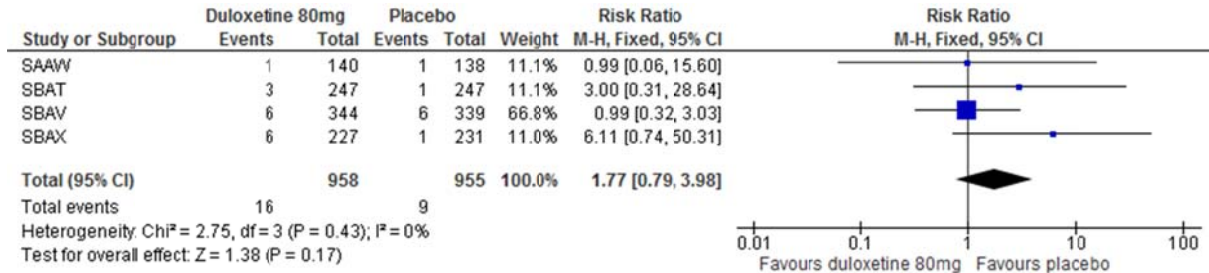
Forest plot (risk difference) of sensitivity analysis of experiencing at least one treatment emergent adverse event



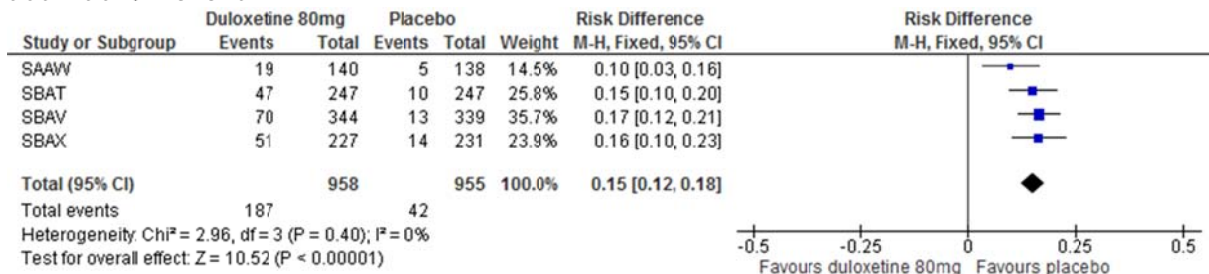
Forest plot (risk difference) of discontinuing because of adverse events



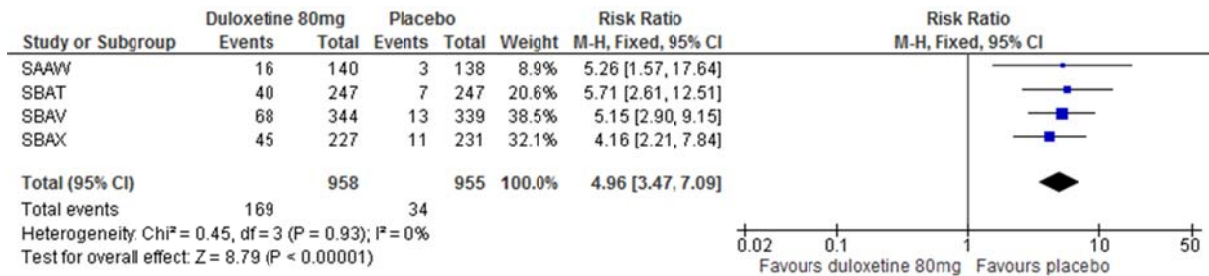
Forest plot (risk ratio) of experiencing at least one non-fatal serious adverse event



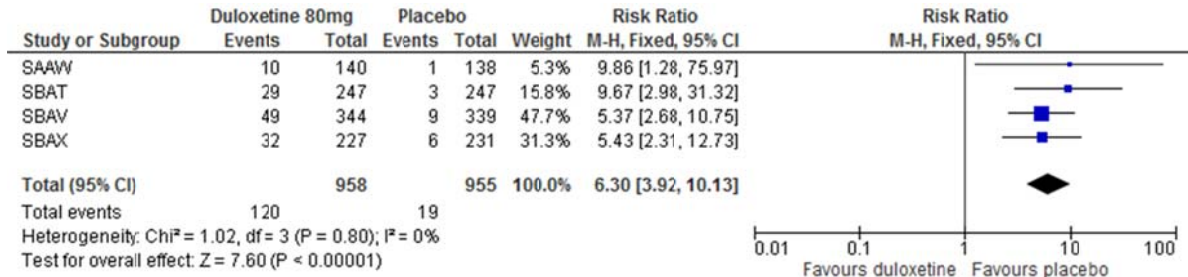
Forest plot (risk difference) of experiencing at least one core or potential activation event



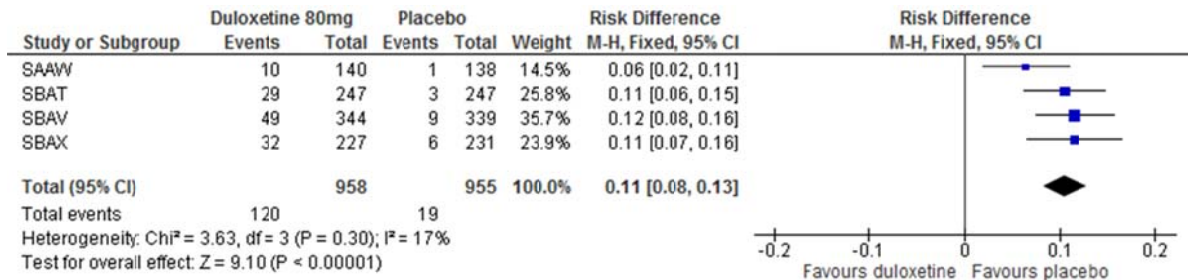
Forest plot (risk ratio) of experiencing at least one core or potential activation event, excluding patients who experienced solely sleep disorder or poor quality sleep



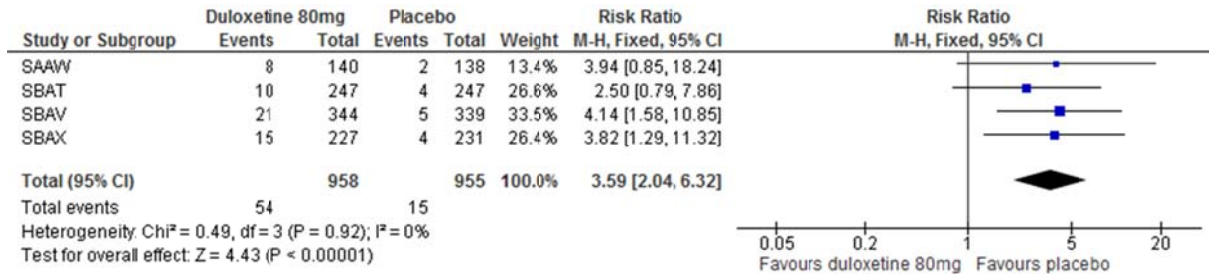
Forest plot (risk ratio) of experiencing at least one event of insomnia (including initial and middle insomnia)



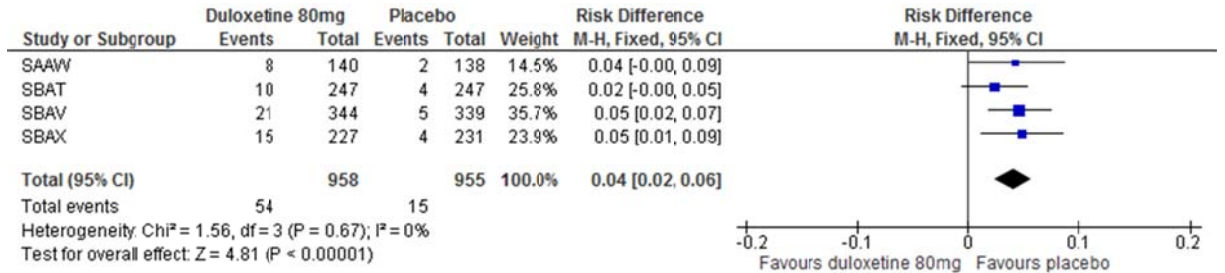
Forest plot (risk difference) of experiencing at least one event of insomnia (including initial and middle insomnia)



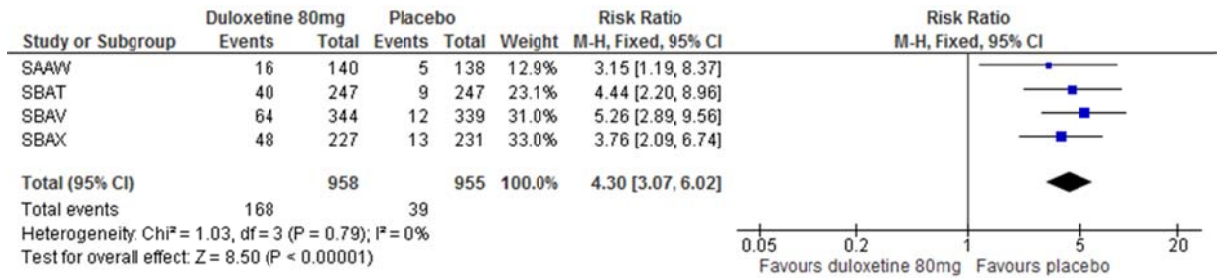
Forest plot (risk ratio) of experiencing at least one core activation event



Forest plot (risk difference) of experiencing at least one core activation event



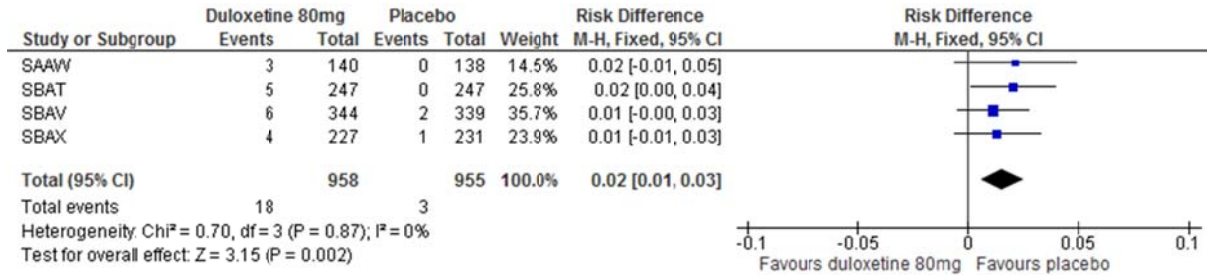
Forest plot (risk ratio) of experiencing at least one FDA defined activation event



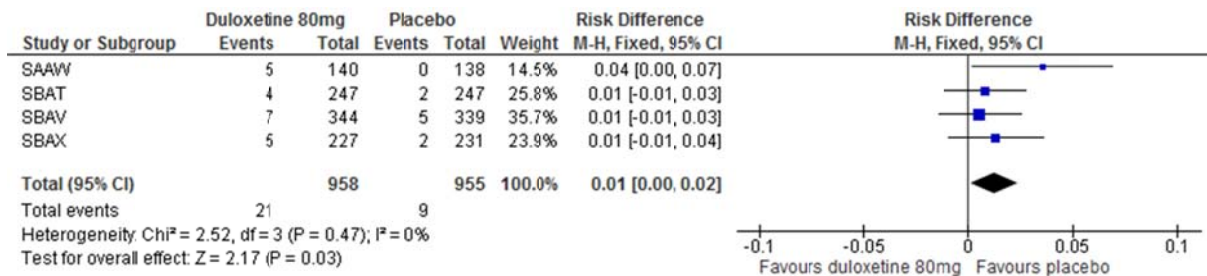
Forest plot (risk ratio) of experiencing at least one FDA defined activation event, excluding patients who experienced solely sleep disorder or poor quality sleep



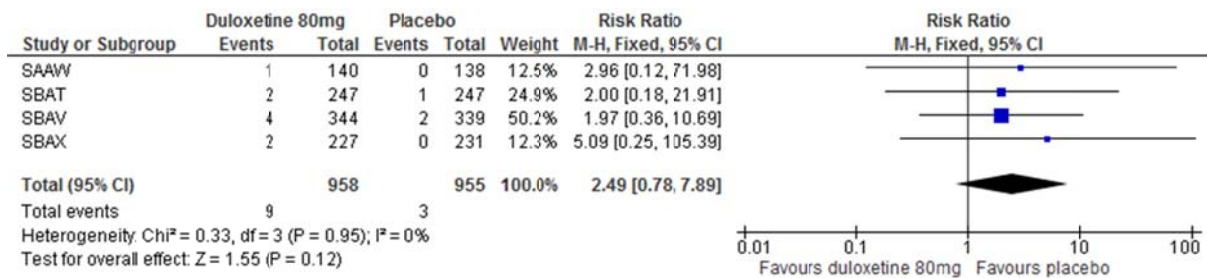
Forest plot (risk difference) of experiencing at least one event of emotional disturbance



Forest plot (risk difference) of experiencing at least one core or potential psychotic event



Forest plot (risk ratio) of experiencing at least one core psychotic event



Forest (risk ratio) of experiencing at least one core or potential depression related event

