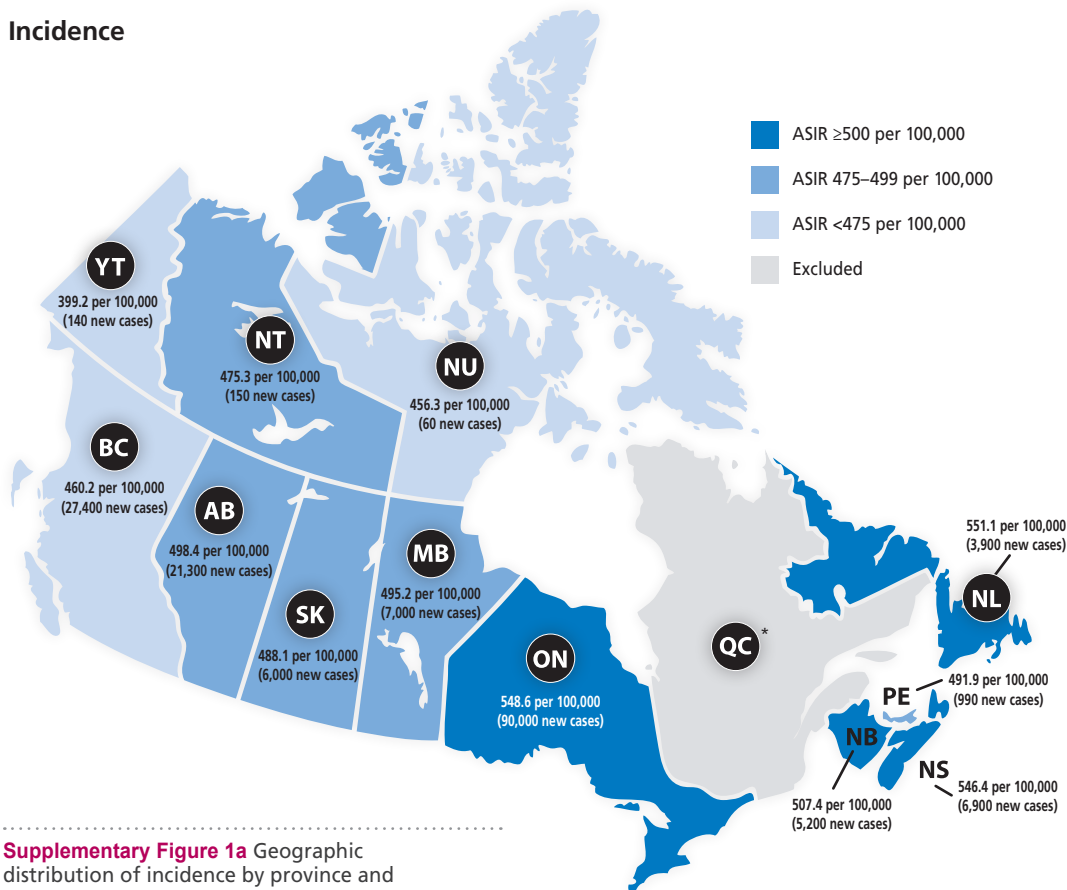


Appendix 3 (as submitted by the authors): Supplementary Figure 1

Incidence



Supplementary Figure 1a Geographic distribution of incidence by province and territory, both sexes, Canada, 2020

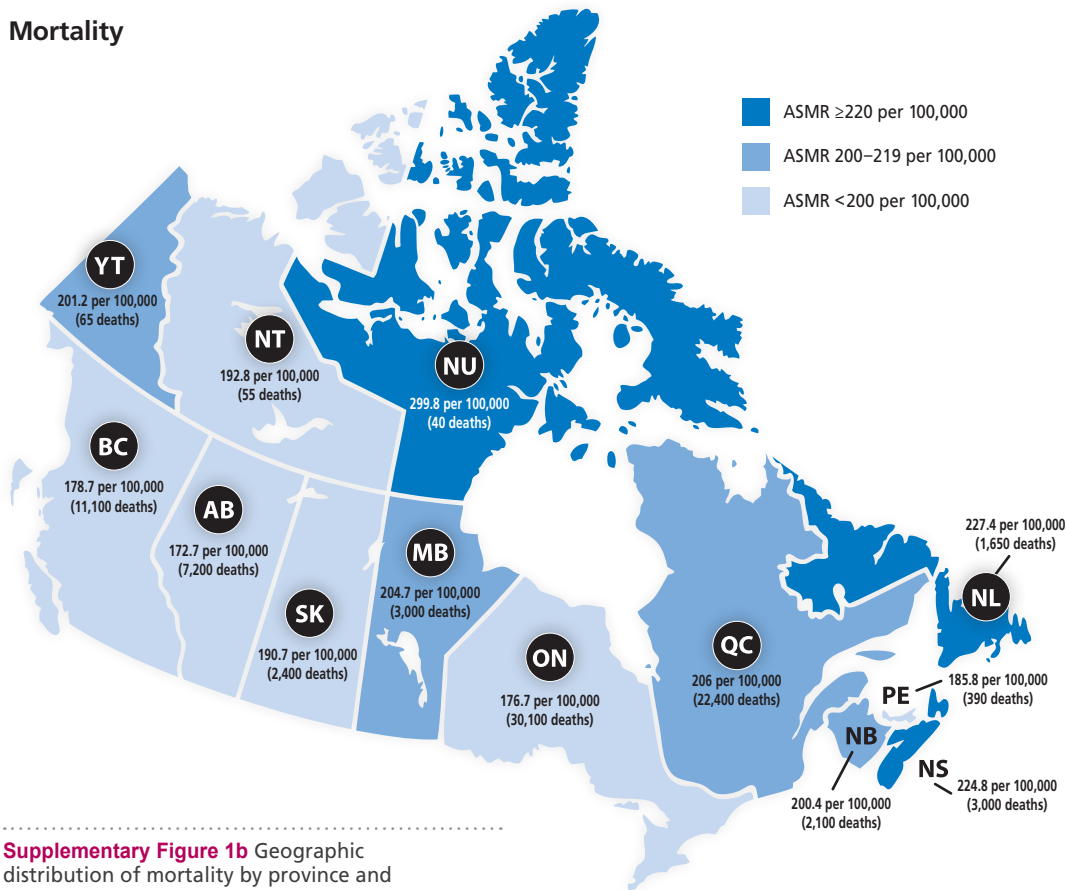
ASIR=age-standardized incidence rate; BC=British Columbia; AB=Alberta; SK=Saskatchewan; MB=Manitoba; ON=Ontario; QC=Quebec; NB=New Brunswick; NS=Nova Scotia; PE=Prince Edward Island; NL=Newfoundland & Labrador; YT=Yukon; NT=Northwest Territories; NU=Nunavut

* Estimates for Quebec incidence were not included because a different projection method was used for Quebec than the other regions, meaning the estimates are not comparable.

Appendix to: Brenner DR, Weir HK, Demers AA, et al. Projected burden of cancer in Canada in 2020. *CMAJ* 2020. doi: 10.1503/cmaj.191292. Copyright © 2020 The Author(s) or their employer(s).

To receive this resource in an accessible format, please contact us at cmajgroup@cmaj.ca.

Mortality



Supplementary Figure 1b Geographic distribution of mortality by province and territory, both sexes, Canada, 2020

ASMR=age-standardized mortality rate; BC=British Columbia; AB=Alberta; SK=Saskatchewan; MB=Manitoba; ON=Ontario; QC=Quebec; NB=New Brunswick; NS=Nova Scotia; PE=Prince Edward Island; NL=Newfoundland & Labrador; YT=Yukon; NT=Northwest Territories; NU=Nunavut