

Appendix 1 (as submitted by the authors): Supplementary Tables and Figures

Table S1. Summary of databases used in the study.

Dataset	Type of Data	Role in Study
Canadian Community Health Survey	Statistics Canada survey	Used to calculate mean Health Utility Index Mark 3 (HUI) among people with and without IBD in 2000 (Cycle 1.1) and 2008 (2009/2010)
CIHI Discharge Abstract Database (DAD)	Health administrative data	Hospitalizations; used in algorithm to identify people with IBD (OCCC)
CIHI National Ambulatory Care Classification System	Health administrative data	Emergency department visits; used in algorithm to identify people with IBD (OCCC)
National Population Health Survey	Statistics Canada survey	Used to calculate mean Health Utility Index Mark 3 (HUI) among people with and without IBD in 1996
OHIP physician claims database	Health administrative data	Outpatient visits; used in algorithm to identify people with IBD (OCCC)
Ontario Crohn's and Colitis Cohort (OCCC)	Validated disease cohort derived from health administrative data	Cohort of all people living with IBD in Ontario; derived from health administrative data housed at ICES
Ontario Drug Benefit database	Health administrative data	Prescription information for individuals ≥ 65 years; used in algorithm to identify people ≥ 65 years with IBD (OCCC)
Registered Person Database	Population data	Provided demographic characteristics (including mean neighbourhood income quintile and rural/urban household) used in matching people with IBD to those without IBD
Vital Statistics	Population data	Used to identify date of death among people with and without IBD

Abbreviations: CIHI, Canadian Institute for Health Information; IBD, inflammatory bowel disease; OCCC, Ontario Crohn's and Colitis Cohort; OHIP, Ontario Health Insurance Plan

Table S2. Validated age-specific algorithms used to identify people with inflammatory bowel disease. Health care contacts (visits and hospitalizations) represent those associated with diagnostic code for IBD (ICD-9: 555.x, 556.x; ICD-10: K50.x, K51),

	Pediatric (<18 years) (1)	Adult (18-64 years) (2)	Elderly (≥65 years) (2)
Algorithm	<ul style="list-style-type: none"> Underwent colonoscopy: 4 outpatient visits or 2 hospitalizations within 3 years^a Did not undergo colonoscopy: 7 outpatient visits or 3 hospitalizations within 3 years 	<ul style="list-style-type: none"> 5 outpatient visits or hospitalizations within 4 years^a 	<ul style="list-style-type: none"> 5 outpatient visits or hospitalizations within 4 years^a, and At least one prescription for an IBD-related medication
Accuracy of algorithm in the development (validation) cohort	Sens: 89.6% (91.1%) Spec: >99.9% (99.5%) PPV: 59.2-75.2% NPV: >99.9%	Sens: 76.8% (92.3%) Spec: 96.2% (99.1%) PPV: 81.4% NPV: 95.0%	Sens: 59.3% (78.3%) Spec: 99.0% (98.2%) PPV: 71.1% NPV: 98.3%
Differentiation between Crohn's disease and ulcerative colitis	5 of last 7 outpatient contacts	5 of last 9 outpatient contacts	
	Sens: 95.1% Spec: 86.0% PPV: 92.0% NPV: 91.2%	Accuracy: 91.1%	

Abbreviations: IBD, inflammatory bowel disease; ICD, International Classification of Diseases; NPV, negative predictive value; PPV, positive predictive value; Sens, sensitivity; Spec, specificity

^aPeople were identified as a case once they accumulated sufficient diagnostic codes for IBD within the specified window. Provided the first of these codes occurred prior to July 1, 1996, 2000, 2008, or 2011, the cases was included as a prevalent case of IBD in that year.

Table S3. Characteristics of people with and without IBD who did and did not participate in a Statistics Canada survey. Differences in characteristics between those participating and not participating in a survey are expected based on survey design.

	NPHS (1996)		CCHS 1.1 (2000)		CCHS 2009/2010 (2008)	
	Participant	Non-Participant	Participant	Non-Participant	Participant	Non-Participant
People with IBD						
N	88	32,730	158	44,443	238	69,321
Age on July 1						
Mean \pm sd	43.13 \pm 16.81	42.40 \pm 16.59	46.19 \pm 17.79	44.21 \pm 16.66	54.19 \pm 17.16	47.31 \pm 16.86
Median (Q1-Q3)	39 (30-55)	40 (30-53)	43 (32-59)	42 (32-55)	54 (40-67)	46 (35-59)
Female Sex, n (%)	46 (52.3)	17,295 (52.8)	88 (55.7)	23,463 (52.8)	147 (61.8)	36,361 (52.5)
Rural*, n (%)	19 (21.6)	4,423 (13.5)	37 (23.4)	5,738 (12.9)	50 (21.0)	8,486 (12.2)
Mean neighbourhood income quintile*, n (%)						
Q1 (lowest)	19 (21.6)	5,407 (16.5)	37 (23.4)	7,174 (16.1)	46 (19.3)	11,036 (15.9)
Q2	20 (22.7)	6,197 (18.9)	30 (19.0)	8,725 (19.6)	39 (16.4)	12,811 (18.5)
Q3	14 (15.9)	6,797 (20.8)	32 (20.3)	9,184 (20.7)	48 (20.2)	14,061 (20.3)
Q4	11 (12.5)	7,091 (21.7)	26 (16.5)	9,307 (20.9)	58 (24.4)	15,493 (22.3)
Q5 (highest)	24 (27.3)	7,238 (22.1)	33 (20.9)	10,053 (22.6)	47 (19.7)	15,920 (23.0)
Type of IBD, n (%)						
Crohn's disease	42 (47.7)	16,762 (51.2)	95 (60.1)	22,158 (49.9)	119 (50.0)	33,292 (48.0)
Ulcerative colitis or IBD-unclassified**	46 (52.3)	15,968 (48.8)	63 (39.9)	22,285 (50.1)	119 (50.0)	36,029 (52.0)
People without IBD						
N	434	162,850	790	221,336	1176	345,825
Age on July 1						
Mean \pm sd	43.08 \pm 16.35	42.28 \pm 16.51	46.20 \pm 17.76	44.10 \pm 16.59	54.17 \pm 17.01	47.25 \pm 16.83
Median (Q1-Q3)	39 (31-54)	40 (30-53)	43 (32-60)	42 (32-55)	55 (40-67)	46 (35-58)
Female Sex, n (%)	224 (51.6)	85,918 (52.8)	440 (55.7)	116,747 (52.7)	729 (62.0)	181,253 (52.4)
Rural*, n (%)	89 (20.5)	21,326 (13.1)	185 (23.4)	27,828 (12.6)	236 (20.1)	41,669 (12.0)
Mean neighbourhood income quintile*, n (%)						
Q1 (lowest)	92 (21.2)	26,854 (16.5)	185 (23.4)	35,672 (16.1)	224 (19.0)	55,026 (15.9)
Q2	100 (23.0)	30,786 (18.9)	150 (19.0)	43,399 (19.6)	191 (16.2)	63,830 (18.5)
Q3	70 (16.1)	33,828 (20.8)	160 (20.3)	45,750 (20.7)	240 (20.4)	70,189 (20.3)
Q4	52 (12.0)	35,291 (21.7)	130 (16.5)	46,414 (21.0)	287 (24.4)	77,277 (22.3)
Q5 (highest)	120 (27.6)	36,091 (22.2)	165 (20.9)	50,101 (22.6)	234 (19.9)	79,503 (23.0)

*For survey respondents, rural/urban household and income quintile are as of date of survey completion; for non-respondents, rural/urban household and income quintile are as of July 1st of each given year. **People with ulcerative colitis and IBD-unclassified were combined due to privacy regulations
Abbreviations: CCHS, Canadian Community Health Survey; IBD, inflammatory bowel disease; NPHS, National Population Health Survey; Q1, first quartile; Q3, third quartile; sd, standard deviation

Table S4. Comparison of life expectancy and health-adjusted life expectancy among females and males with Crohn's disease (CD) and matched people without CD. Significant differences are highlighted in bold font.

		1996			2000			2008			2011 ^a			Difference Over Time ^b		
		CD	Non-CD	Difference	CD	Non-CD	Difference	CD	Non-CD	Difference	CD	Non-CD	Difference	CD	Non-CD	
LE (95% CI)	Females	74.5y (73.3, 75.7)	82.1y (81.5, 82.7)	-7.6y (-8.9, -6.2)	75.1y (74.2, 76.0)	83.6y (83.0, 84.1)	-8.5y (-9.6, -7.4)	76.4y (75.6, 77.2)	86.2y (85.7, 86.6)	-9.8y (-10.7, -8.9)	76.3y (75.3, 77.4)	85.8y (85.4, 86.2)	-9.5y (-10.6, -8.3)	1.8y (0.2, 3.4)	3.7y (3.0, 4.4)	
	Males	70.7y (69.4, 72.0)	77.2y (76.4, 77.9)	-6.5y (-8.0, -4.9)	73.6y (72.4, 74.7)	79.3y (78.6, 80.0)	-5.7y (-7.1, -4.4)	73.4y (72.4, 74.3)	80.7y (80.1, 81.3)	-7.3y (-8.5, -6.2)	73.8y (72.8, 74.7)	81.2y (80.8, 81.7)	-7.5y (-8.5, -6.4)	3.1y (1.4, 4.7)	4.1y (3.2, 4.9)	
HALE (95% CI)	Overall	Females	60.2y (57.4, 63.1)	74.9y (73.4, 76.4)	-14.6y (-17.8, -11.4)	56.6y (53.9, 59.3)	71.5y (69.8, 73.1)	-14.9y (-18.0, -11.7)	59.6y (57.0, 62.2)	73.9y (72.2, 75.6)	-14.3y (-17.4, -11.2)	-	-	-	-0.7y (-4.5, 3.2)	-1.0y (-3.3, 1.3)
		Difference ^c	14.3y	7.2y		18.5y	12.1y		16.8y	12.3y		-	-	-		
		Ratio ^d	0.81	0.91		0.75	0.86		0.78	0.86		-	-	-		
		Males	64.3y (61.9, 66.7)	69.9y (68.6, 71.3)	-5.7y (-8.4, -2.9)	61.5y (58.0, 65.0)	70.0y (68.4, 71.5)	-8.5y (-12.3, -4.7)	59.7y (56.8, 62.7)	69.5y (68.2, 70.9)	-9.8y (-13.0, -6.6)	-	-	-	-4.5y (-8.3, 0.8)	-0.4y (-2.3, 1.6)
		Difference ^c	6.4y	7.2y		12.1y	9.3y		13.6y	11.2y		-	-	-		
	Ratio ^d	0.91	0.91		0.84	0.88		0.81	0.86		-	-	-			
	Pain-Specific	Females	64.1y (60.6, 67.7)	76.2y (74.4, 78.0)	-12.1y (-16.0, -8.1)	58.9y (55.4, 62.4)	75.5y (73.7, 77.2)	-16.6y (-20.5, -12.7)	60.7y (57.9, 63.4)	79.5y (78.2, 80.9)	-18.8y (-21.9, -15.8)	-	-	-	-3.5y (-7.9, 1.0)	3.3y (1.0, 5.6)
		Difference ^c	10.4y	5.9y		16.1y	8.1y		15.7y	6.6y		-	-	-		
		Ratio ^d	0.86	0.93		0.79	0.90		0.79	0.92		-	-	-		
		Males	67.2y (65.0, 69.4)	71.7y (69.7, 73.7)	-4.4y (-7.4, -1.5)	63.0y (59.7, 66.4)	73.6y (71.6, 75.5)	-10.5y (-14.4, -6.6)	60.0y (56.7, 63.3)	77.4y (76.3, 78.5)	-17.4y (-20.9, -13.9)	-	-	-	-7.2y (-11.2, -3.3)	5.7y (3.4, 8.0)
		Difference ^c	3.5y	5.5y		10.5y	5.7y		13.4y	3.3y		-	-	-		
	Ratio ^d	0.95	0.93		0.86	0.93		0.82	0.96		-	-	-			
	Emotional Well-Being	Females	73.0y (71.6, 74.5)	81.0y (80.2, 81.9)	-8.0y (-9.6, -6.4)	72.6y (71.3, 73.8)	81.0y (80.1, 81.9)	-8.4y (-9.9, -6.9)	74.4y (73.2, 75.6)	84.0y (83.4, 84.7)	-9.6y (-11.0, -8.3)	-	-	-	1.4 (-0.5, 3.2)	3.0y (1.9, 4.0)
		Difference ^c	1.5y	1.1y		2.5y	2.6y		1.9y	2.1y		-	-	-		
		Ratio ^d	0.98	0.99		0.97	0.97		0.97	0.98		-	-	-		
Males		69.3y (67.6, 71.1)	76.2y (75.4, 77.1)	-6.9y (-8.8, -5.0)	70.1y (67.7, 72.5)	77.2y (76.3, 78.1)	-7.1y (-9.6, -4.5)	70.3y (68.8, 71.9)	76.9y (75.8, 78.0)	-6.6y (-8.5, -4.7)	-	-	-	1.0y (-1.4, 3.3)	0.7y (-0.7, 2.1)	
Difference ^c		1.4y	1.0y		3.4y	2.1y		3.0y	3.8y		-	-	-			
Ratio ^d	0.98	0.99		0.95	0.97		0.96	0.95		-	-	-				

^a Health-adjusted life expectancy could not be calculated in 2011 as there was no corresponding Statistics Canada population health survey that included the Health Utility Index Mark 3 (HUI)

^b Difference between 2011 and 1996 for life expectancy and difference between 2008 and 1996 for health-adjusted life expectancy.

^cDifference between life expectancy and health-adjusted life expectancy

^dRatio of health-adjusted life expectancy to life expectancy

Abbreviations: CD, Crohn's disease; CI, confidence interval; y, years

Table S5. Comparison of life expectancy and health-adjusted life expectancy among females and males with ulcerative colitis (UC) and matched people without UC. Significant differences are highlighted in bold font.

		1996			2000			2008			2011 ^a			Difference Over Time ^b		
		UC	Non-UC	Difference	UC	Non-UC	Difference	UC	Non-UC	Difference	UC	Non-UC	Difference	UC	Non-UC	
LE (95% CI)	Females	77.6y (74.8, 80.4)	82.1y (81.6, 82.7)	-4.5y (-7.4, -1.7)	78.7y (77.4, 80.0)	83.7y (83.2, 84.2)	-5.1y (-6.5, -3.7)	79.8y (78.3, 81.3)	86.0y (85.5, 86.5)	-6.2y (-7.8, -4.7)	80.5y (79.7, 81.4)	86.3y (86.0, 86.7)	-5.8y (-6.7, -4.8)	3.0y (-0.001, 5.9)	4.2y (3.5, 4.8)	
	Males	73.6y (72.0, 75.1)	77.9y (77.3, 78.4)	-4.3y (-5.9, -2.7)	75.3y (74.4, 76.3)	79.5y (79.0, 80.1)	-4.2y (-5.3, -3.1)	76.7y (75.9, 77.5)	81.4y (81.0, 81.9)	-4.7y (-5.6, -3.8)	76.7y (75.5, 77.9)	81.4y (80.6, 82.2)	-4.7y (-6.1, -3.3)	3.1y (1.2, 5.1)	3.5y (2.6, 4.5)	
HALE (95% CI)	Overall	Females	70.3y (66.9, 73.7)	74.5y (72.9, 76.2)	-4.2y (-8.0, -0.4)	69.9y (67.4, 72.5)	72.4y (70.2, 74.5)	-2.4y (-5.8, 0.9)	71.2y (68.5, 73.8)	75.9y (74.9, 76.9)	-4.7y (-7.5, -1.9)	-	-	-	0.8y (-3.5, 5.1)	1.4y (-0.6, 3.3)
		Difference ^c	7.3y	7.6y		8.7y	11.4y		8.6y	10.1y		-	-	-		
		Ratio ^d	0.91	0.91		0.89	0.86		0.89	0.88		-	-	-		
		Males	68.8y (66.2, 71.4)	70.3y (68.7, 71.9)	-1.5y (-4.5, 1.6)	67.6y (65.4, 69.9)	74.5y (73.5, 75.5)	-6.8y (-9.3, -4.4)	67.8y (65.8, 69.8)	70.9y (68.3, 73.4)	-3.0y (-6.3, 0.2)	-	-	-	-1.0y (-4.2, 2.3)	0.6y (-2.4, 3.6)
		Difference ^c	4.8y	7.6y		7.7y	5.0y		8.9y	10.6y		-	-	-		
	Ratio ^d	0.94	0.90		0.90	0.94		0.88	0.87		-	-	-			
	Pain-Specific	Females	74.7y (70.9, 78.4)	79.4y (78.3, 80.5)	-4.7y (-8.6, -0.8)	71.0y (68.1, 73.9)	76.7y (74.5, 78.8)	-5.7y (-9.3, -2.1)	73.4y (70.3, 76.4)	79.9y (78.7, 81.1)	-6.6y (-9.8, -3.3)	-	-	-	-1.3y (-6.1, 3.5)	0.5y (-1.1, 2.2)
		Difference ^c	2.9y	2.7y		7.7y	7.1y		6.4y	6.1y		-	-	-		
		Ratio ^d	0.96	0.97		0.90	0.92		0.92	0.93		-	-	-		
		Males	68.2y (64.7, 71.6)	75.7y (74.7, 76.7)	-7.5y (-11.1, -3.9)	67.1y (63.9, 70.4)	77.8y (76.8, 78.7)	-10.6y (-14.0, -7.3)	72.7y (70.4, 75.1)	74.4y (72.4, 76.5)	-1.7y (-4.8, 1.4)	-	-	-	4.5y (0.4, 8.7)	-1.3y (-3.5, 1.0)
Difference ^c		5.4y	2.2y		8.2y	1.8y		4.0y	7.0y		-	-	-			
Ratio ^d	0.93	0.97		0.89	0.98		0.95	0.91		-	-	-				
Emotional Well-Being	Females	77.2y (74.3, 80.0)	81.1y (80.4, 81.8)	-3.9y (-6.8, -0.9)	77.3y (75.8, 78.8)	80.3y (78.9, 81.7)	-3.0y (-5.0, -1.0)	78.5y (76.9, 80.1)	83.8y (83.1, 84.5)	-5.3y (-7.1, -3.6)	-	-	-	1.3y (-2.0, 4.5)	2.7y (1.7, 3.7)	
	Difference ^c	0.4y	1.1y		1.4y	3.4y		1.3y	2.2y		-	-	-			
	Ratio ^d	0.99	0.99		0.98	0.96		0.98	0.97		-	-	-			
	Males	73.2y (71.7, 74.8)	75.8y (74.6, 77.1)	-2.6y (-4.6, -0.6)	75.0y (74.1, 76.0)	78.3y (77.6, 79.0)	-3.3y (-4.5, -2.1)	75.0y (73.9, 76.1)	79.8y (79.1, 80.4)	-4.8y (-6.1, -3.5)	-	-	-	1.8y (-0.1, 3.7)	4.0y (2.5, 5.4)	
	Difference ^c	0.3y	2.1y		0.3y	1.2y		1.7y	1.6y		-	-	-			
Ratio ^d	1.00	0.97		1.00	0.98		0.98	0.98		-	-	-				

^aHealth-adjusted life expectancy could not be calculated in 2011 as there was no corresponding Statistics Canada population health survey that included the Health Utility Index Mark 3 (HUI)

^bDifference between 2011 and 1996 for life expectancy and difference between 2008 and 1996 for health-adjusted life expectancy.

^cDifference between life expectancy and health-adjusted life expectancy

^dRatio of health-adjusted life expectancy to life expectancy

Abbreviations: CI, confidence interval; UC, ulcerative colitis; y, years

Table S6. Comparison of five-year mortality rates in people with inflammatory bowel disease (IBD) and people without IBD. Significant associations are highlighted in bold font.

Sex	1996		2000		2008		2011				
	Mortality Rate Per 1000 py (95% CI)		Mortality Rate Per 1000 py (95% CI)		Mortality Rate Per 1000 py (95% CI)		Mortality Rate Per 1000 py (95% CI)				
	IBD	Non-IBD	IBD	Non-IBD	IBD	Non-IBD	IBD	Non-IBD			
Females	7.67 (7.08, 8.28)	4.74 (4.53, 4.97)	1.62 (1.48, 1.77)	4.90 (4.71, 5.09)	1.82 (1.69, 1.95)	10.03 (9.57, 10.51)	5.01 (4.85, 5.17)	2.00 (1.89, 2.12)	10.05 (9.62, 10.50)	5.07 (4.92, 5.21)	1.98 (1.88, 2.09)
Males	10.61 (9.89, 11.38)	7.24 (6.95, 7.53)	1.47 (1.35, 1.59)	6.91 (6.67, 7.15)	1.42 (1.32, 1.53)	10.99 (10.48, 11.52)	7.31 (7.12, 7.52)	1.50 (1.42, 1.59)	11.26 (10.78, 11.76)	7.03 (6.85, 7.21)	1.60 (1.52, 1.68)
	CD	Non-CD	CD	Non-CD	CD	Non-CD	CD	Non-CD			
Females	7.87 (7.10, 8.72)	4.00 (3.73, 4.28)	1.97 (1.74, 2.23)	4.18 (3.94, 4.42)	2.03 (1.83, 2.25)	9.70 (9.07, 10.38)	4.16 (3.96, 4.37)	2.33 (2.15, 2.53)	10.00 (9.40, 10.65)	4.33 (4.14, 4.52)	2.31 (2.14, 2.50)
Males	8.87 (7.93, 9.92)	5.43 (5.08, 5.81)	1.63 (1.43, 1.86)	5.31 (5.01, 5.62)	1.48 (1.32, 1.67)	9.72 (9.03, 10.47)	5.77 (5.51, 6.04)	1.69 (1.54, 1.84)	10.05 (9.39, 10.76)	5.65 (5.42, 5.90)	1.78 (1.64, 1.93)
	UC	Non-UC	UC	Non-UC	UC	Non-UC	UC	Non-UC			
Females	6.86 (6.05, 7.78)	5.52 (5.17, 5.90)	1.24 (1.08, 1.43)	5.63 (5.33, 5.94)	1.54 (1.38, 1.72)	9.85 (9.19, 10.56)	5.80 (5.55, 6.05)	1.70 (1.57, 1.84)	9.98 (9.36, 10.65)	5.79 (5.57, 6.02)	1.72 (1.60, 1.86)
Males	11.43 (10.40, 12.56)	8.81 (8.37, 9.27)	1.30 (1.17, 1.45)	11.34 (10.45, 12.30)	8.38 (8.02, 8.76)	1.35 (1.23, 1.48)	11.91 (11.17, 12.68)	8.62 (8.32, 8.93)	12.34 (11.65, 13.08)	8.32 (8.05, 8.60)	1.48 (1.39, 1.59)

Abbreviations: CI, confidence interval; IBD, inflammatory bowel disease; py, person years; RR, relative risk

Table S7. Mean Health Utility Index Mark 3 (HUI) and 95% confidence interval (CI) in people with IBD and matched people without IBD.

Sex	NPHS (1996)		CCHS 1.1 (2000)		CCHS 2009/2010 (2008)	
Overall HUI						
	IBD	Non-IBD	IBD	Non-IBD	IBD	Non-IBD
Females	0.82 (0.75-0.90)	0.91 (0.89-0.94)	0.73 (0.63-0.82)	0.87 (0.84-0.89)	0.79 (0.71-0.86)	0.84 (0.81-0.88)
Males	0.91 (0.87-0.96)	0.90 (0.88-0.93)	0.88 (0.83-0.92)	0.89 (0.87-0.92)	0.79 (0.72-0.86)	0.85 (0.82-0.87)
	CD	Non-CD	CD	Non-CD	CD	Non-CD
Females	0.80 (0.70-0.89)	0.91 (0.87-0.95)	0.71 (0.59-0.83)	0.89 (0.86-0.92)	0.75 (0.66-0.84)	0.83 (0.77-0.89)
Males	0.88 (0.80-0.96)	0.92 (0.89-0.95)	0.86 (0.79-0.93)	0.87 (0.83-0.91)	0.76 (0.65-0.88)	0.85 (0.81-0.89)
	UC	Non-UC	UC	Non-UC	UC	Non-UC
Females	0.88 (0.77-0.99)	0.92 (0.89-0.95)	0.79 (0.67-0.91)	0.83 (0.76-0.89)	0.85 (0.75-0.94)	0.87 (0.84-0.89)
Males	0.92 (0.87-0.97)	0.90 (0.87-0.94)	0.90 (0.85-0.96)	0.93 (0.90-0.95)	0.82 (0.73-0.90)	0.84 (0.80-0.89)
HUI attributed to pain						
	IBD	Non-IBD	IBD	Non-IBD	IBD	Non-IBD
Females	0.84 (0.74-0.95)	0.94 (0.91-0.97)	0.76 (0.64-0.88)	0.92 (0.89-0.95)	0.79 (0.68-0.90)	0.91 (0.88-0.93)
Males	0.93 (0.88-0.98)	0.96 (0.94-0.98)	0.89 (0.84-0.95)	0.94 (0.91-0.98)	0.84 (0.75-0.93)	0.91 (0.88-0.94)
	CD	Non-CD	CD	Non-CD	CD	Non-CD
Females	0.83 (0.73-0.94)	0.92 (0.87-0.97)	0.73 (0.58-0.89)	0.93 (0.89-0.96)	0.73 (0.59-0.88)	0.90 (0.87-0.94)
Males	0.93 (0.86-1.01)	0.96 (0.92-0.99)	0.88 (0.80-0.95)	0.92 (0.86-0.97)	0.77 (0.62-0.91)	0.94 (0.90-0.97)
	UC	Non-UC	UC	Non-UC	UC	Non-UC
Females	0.90 (0.74-1.06)	0.96 (0.93-0.98)	0.82 (0.69-0.95)	0.90 (0.86-0.95)	0.88 (0.77-1.00)	0.92 (0.89-0.95)
Males	0.92 (0.85-0.99)	0.97 (0.95-0.99)	0.92 (0.83-1.00)	0.98 (0.97-0.99)	0.92 (0.84-1.01)	0.88 (0.82-0.95)
HUI attributed to emotional well-being						
	IBD	Non-IBD	IBD	Non-IBD	IBD	Non-IBD
Females	0.99 (0.98-0.99)	0.98 (0.98-0.99)	0.96 (0.94-0.97)	0.96 (0.95-0.98)	0.98 (0.97-0.99)	0.97 (0.96-0.98)
Males	0.98 (0.97-1.00)	0.98 (0.96-0.99)	0.97 (0.94-0.99)	0.97 (0.96-0.98)	0.95 (0.93-0.98)	0.96 (0.95-0.97)
	CD	Non-CD	CD	Non-CD	CD	Non-CD
Females	0.98 (0.96-0.99)	0.99 (0.98-1.00)	0.95 (0.93-0.98)	0.97 (0.96-0.98)	0.98 (0.97-1.00)	0.97 (0.96-0.98)
Males	0.97 (0.94-1.00)	0.99 (0.98-1.00)	0.95 (0.91-0.99)	0.97 (0.95-0.98)	0.95 (0.91-0.98)	0.96 (0.94-0.98)
	UC	Non-UC	UC	Non-UC	UC	Non-UC
Females	0.99 (0.98-1.00)	0.98 (0.97-1.00)	0.96 (0.92-0.99)	0.94 (0.90-0.98)	0.98 (0.96-1.00)	0.97 (0.96-0.98)
Males	0.99 (0.98-1.01)	0.97 (0.95-0.99)	0.99 (0.99-1.00)	0.97 (0.95-0.99)	0.96 (0.92-1.00)	0.97 (0.95-0.99)

Abbreviations: CCHS, Canadian Community Health Survey; CD, Crohn's disease; CI, confidence interval; IBD, inflammatory bowel disease; NPHS, National Population Health Survey; UC, ulcerative colitis

Figure S1. Life expectancy and health-adjusted life expectancy in people with Crohn's disease (CD) and matched people without CD.

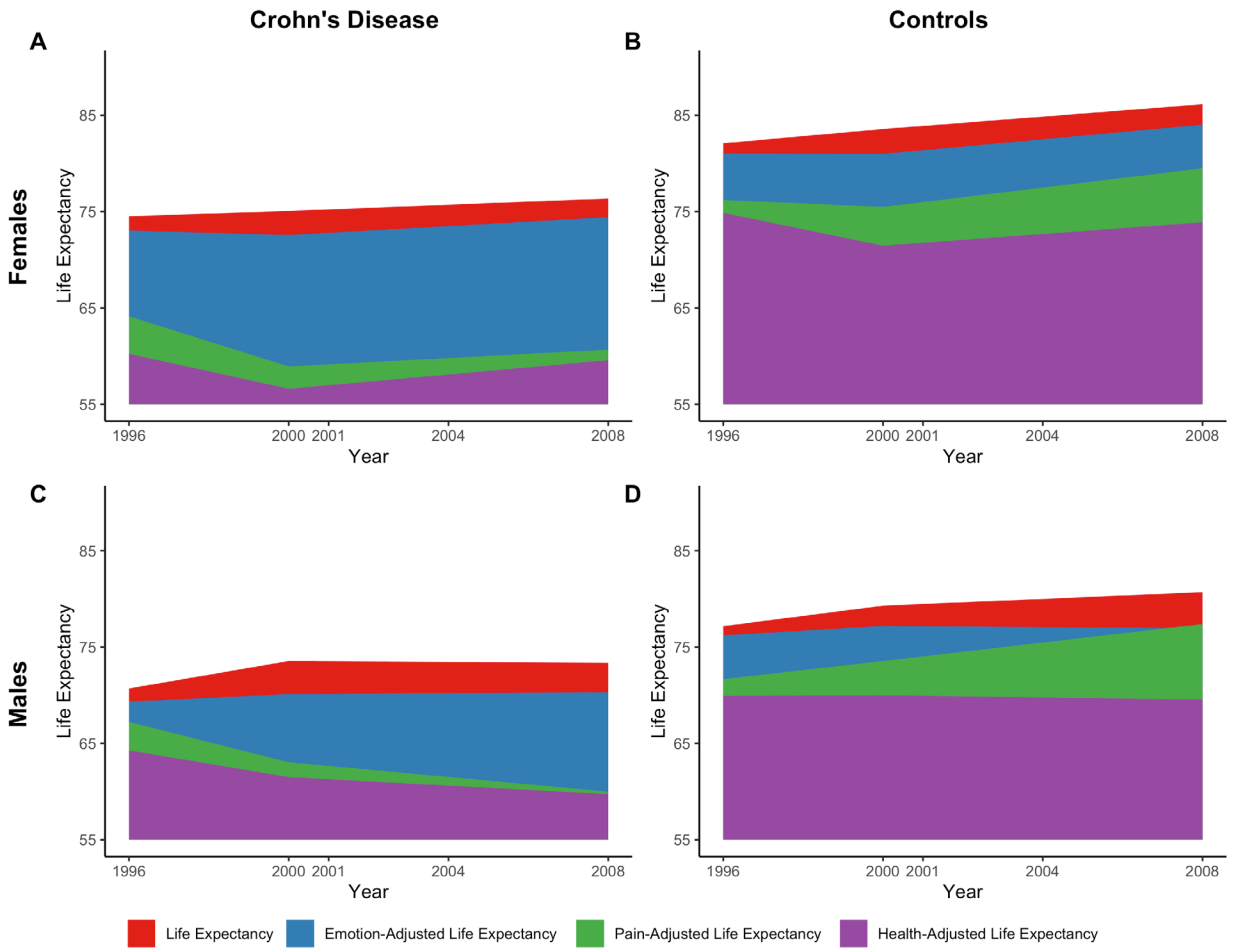
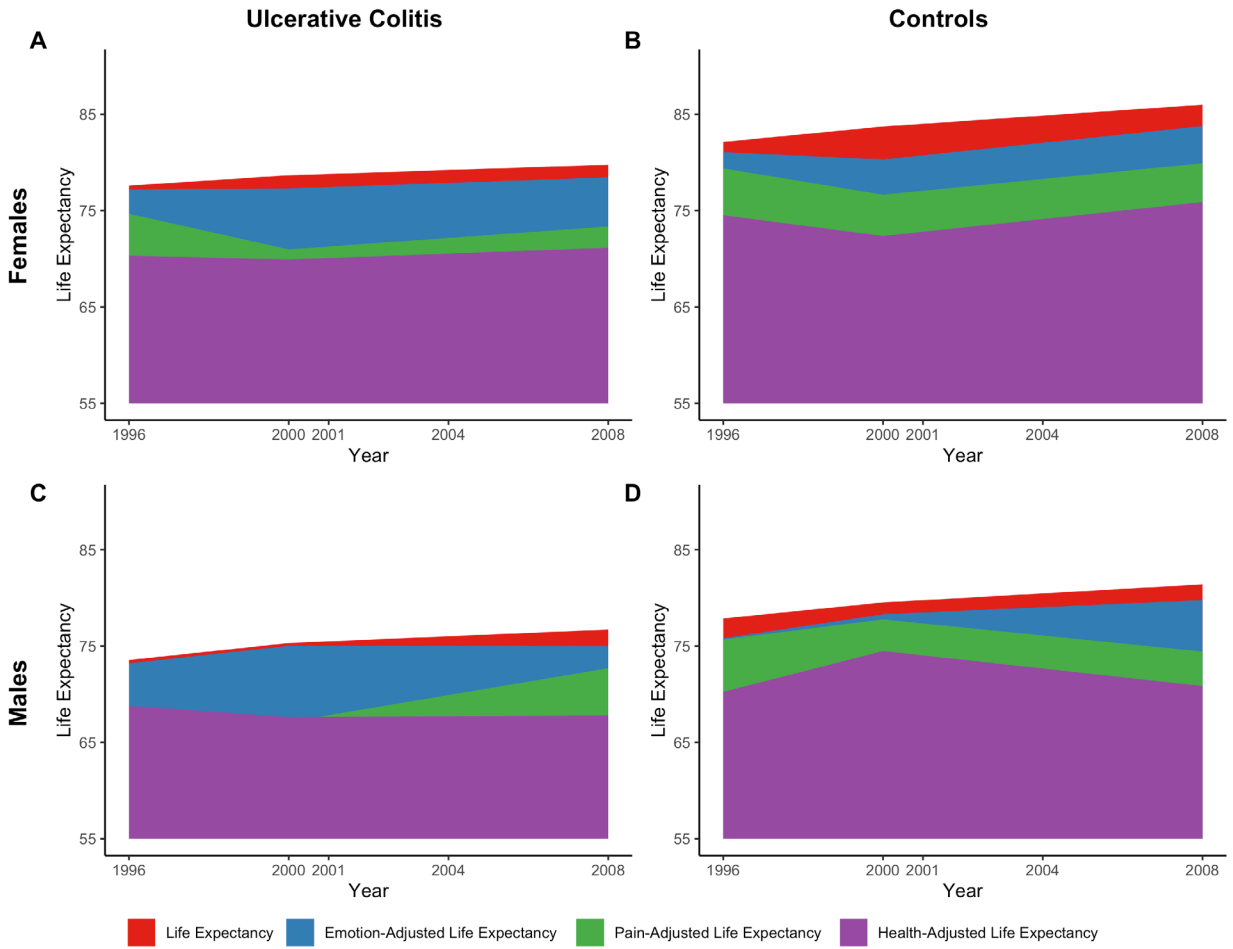


Figure S2. Life expectancy and health-adjusted life expectancy in people with ulcerative colitis (UC) and matched people without UC.



References

1. Benchimol EI, Guttman A, Griffiths AM, Rabeneck L, Mack DR, Brill H, et al. Increasing incidence of paediatric inflammatory bowel disease in Ontario, Canada: evidence from health administrative data. *Gut*. 2009 Oct 15;58(11):1490–7.
2. Benchimol EI, Guttman A, Mack DR, Nguyen GC, Marshall JK, Gregor JC, et al. Validation of international algorithms to identify adults with inflammatory bowel disease in health administrative data from Ontario, Canada. *J Clin Epidemiol*. Elsevier Inc; 2014 Aug 1;67(8):887–96.