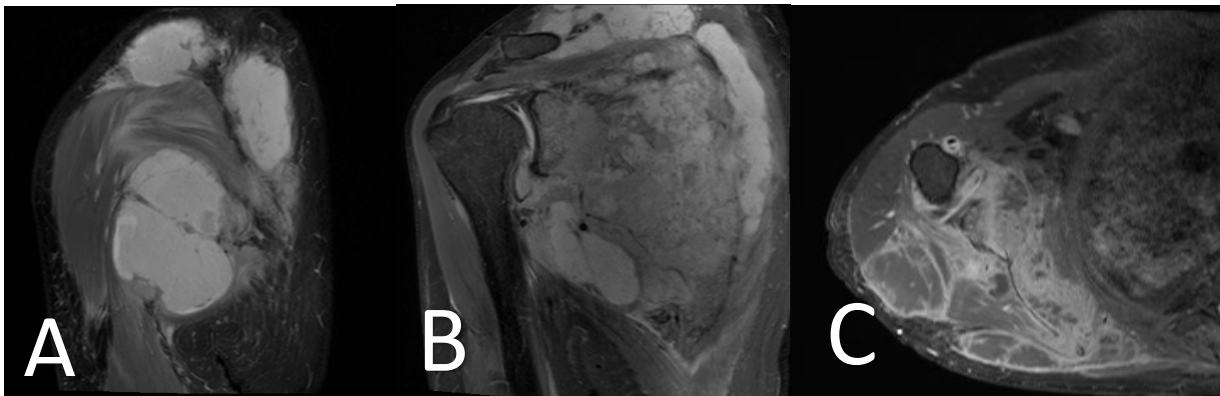


Appendix A. Frontal and lateral chest radiographs of the thorax. On the frontal radiograph (A), extensive osteolysis of the right scapula is present (arrows). Both radiographs demonstrate a diffuse micronodular pattern.



Appendix B. Parasagittal fat-saturated T2 TSE (A), coronal fat-saturated T2 TSE (B) and axial fat-saturated T1 TSE with gadolinium infusion (C) images of the right shoulder. Images A and B demonstrated an extensive multifocal abscess surrounding the scapula. Images C shows a diffuse myositis process with avid gadolinium enhancement involving the musculature.