

## Supplementary material:

### Standardised brief geriatric evaluation versus routine care for preventing functional decline in primary care: a pragmatic cluster-randomised trial

#### Table of contents

|  |    |
|--|----|
| 1. Patient selection.....  | 1  |
| 2. Sensitivity analyses.....   | 2  |
| 3. Per-protocol population.....                                      | 3  |
| 4. Longitudinal analysis.....  | 4  |
| 5. Longitudinal analysis stratified by age and gender.....           | 9  |
| 6. Distribution of IADL and ADL loss.....                            | 12 |
| 7. Details of instrumental and basic activities of daily living..... | 13 |
| 8. Adhesion to intervention.....                                     | 19 |

#### 1. Patient selection

Physicians could use two strategies for patient selection: random selection of one or two patient per consultation date or systematic exhaustive screening of all their patients until reaching the planned sample size. 9/43 (20.9%) FPs chose random selection.

Table S1. Comparison of patients according to selection method

|   | No random selection | Random selection |
|---|---------------------|------------------|
| <b>Number of physicians</b>                           | 34                  | 9                |
| <b>Number of patients screened</b>                    | 616                 | 338              |
| <b>Number ineligible (% among screened)</b>           | 47 (7.6)            | 17 (5.0)         |
| <b>Number of patients included (% among eligible)</b> | 328 (57.6)          | 101 (31.5)       |
| <b>% female among included</b>                        | 62.2                | 66.3             |
| <b>Mean age among included (in years)</b>             | 82.0                | 82.7             |

When comparing the 429 included patients with non-included aged over 75 years old seen during the screening period, included patients were slightly younger (82 versus 83 years old, and a slightly higher proportion of females (63% vs 60%, not significant).

Table S2. Comparison patient characteristics between not-included and included patients

|  | <b>Total (N=954)</b> | <b>Included (N=429)</b> | <b>Not included (N=513)</b> | <b>p-value</b> |
|--|----------------------|-------------------------|-----------------------------|----------------|
| <b>N female, %, 12 missing</b>                 | 576 (61.2)           | 271 (63.2)              | 305 (59.5)                  | 0.244          |
| <b>Mean age at screening (SD) (23 missing)</b> | 82.7 (5.3)           | 82.2 (4.9)              | 83.2 (5.5)                  | 0.004          |

## 2. Sensitivity analyses

Table S3. Sensitivity analysis (I) considering deaths and admissions to an institution as having lost more than 1 IADL, respectively ADL. Results of generalized linear mixed effect models

|                               | <b>Intervention (I)</b> | <b>Control (C)</b> | <b>Estimated difference (I-C, 95%CI)*</b> | <b>OR (I/C, 95%CI)</b> | <b>p-value</b> | <b>ICC (95%CI)</b> |
|-------------------------------|-------------------------|--------------------|---|------------------------|----------------|--------------------|
| At least 1 IADL lost, n/N (%) | 95/190 (50.0 %)         | 99/191 (51.8 %)    | -1.8% (-11.8%, 8.1%)                      | 0.93 (0.62,1.39)       | 0.721          | 0.00 (0.000,0.066) |
| At least 1 ADL lost, n/N (%)  | 44/194 (22.7 %)         | 46/195 (23.6 %)    | -1.0% (-10.2%, 8.3%)                      | 0.94 (0.54,1.64)       | 0.825          | 0.04 (0.011,0.168) |

Table S4. Sensitivity analysis (II) considering all missing at 2 years as having lost more than 1 IADL, respectively ADL. Results of generalized linear mixed effect models

|                               | <b>Intervention (I)</b> | <b>Control (C)</b> | <b>Estimated difference (I-C, 95%CI)*</b> | <b>OR (I/C, 95%CI)</b> | <b>p-value</b> | <b>ICC (95%CI)</b> |
|-------------------------------|-------------------------|--------------------|---|------------------------|----------------|--------------------|
| At least 1 IADL lost, n/N (%) | 107/201 (53.2 %)        | 102/193 (52.8 %)   | +0.38% (-9.6%,10.1%)                      | 1.02 (0.68,1.51)       | 0.939          | 0.00 (0.000,0.044) |
| At least 1 ADL lost, n/N (%)  | 57/205 (27.8 %)         | 48/196 (24.5 %)    | +3.1% (-6.5%,12.4%)                       | 1.18 (0.70,1.99)       | 0.512          | 0.04 (0.007,0.150) |

### 3. Per-protocol population

Table S5. Per protocol analysis. Results of generalized linear (IADL and ADL) and linear (WHOQOL - Score) mixed effect models

|                                  | <b>Interventio<br/>n (I)</b> | <b>Control<br/>(C)</b> | <b>Estimated<br/>difference<br/>(I-C, 95%CI)*</b> | <b>OR (I/C,<br/>95%CI)</b> | <b>p-<br/>value</b> | <b>ICC (95%CI)</b>    |
|----------------------------------|------------------------------|------------------------|---|----------------------------|---------------------|-----------------------|
| At least 1 IADL<br>lost, n/N (%) | 38/83<br>(45.8%)             | 83/174<br>(47.7%)      | -1.9%<br>(-15.1%,<br>11.2%)                       | 0.93<br>(0.52,1.63)        | 0.782               | 0.01<br>(0.001,0.128) |
| At least 1 ADL<br>lost, n/N (%)  | 10/87<br>(11.5%)             | 30/178<br>(16.9%)      | -5.7%<br>(-14.9,5.2)                              | 0.60<br>(0.21,1.45)        | 0.274               | 0.10<br>(0.023,0.337) |
| WHOQOL-<br>OLD score             | (N=73)                       | (N=153)                |   |                            |                     |                       |
| Mean<br>difference (sd)          | -0.33 (7.8)                  | 0.74 (7.8)             | -1.04<br>(-3.25,1.22)                             | -                          | 0.363               | 0.01<br>(0.000,0.100) |

\* Corrected for cluster effect

Abbreviations:

ADL: basic activities of daily living; IADL: instrumental activities of daily living; ICC intracluster correlation; OR odds ratio; sd: standard deviation; WHOQOL-OLD: WHO Quality-of-life score for older adults

## 4. Longitudinal analysis

Table S6. Results of the unadjusted Poisson mixed effect model (IADL and ADL) and of the linear mixed effect model (WHOQOL-score).

|                               | IADL                  |             |         | ADL                  |             |         | WHOQOL-OLD score       |               |         |
|-------------------------------|-----------------------|-------------|---------|----------------------|-------------|---------|------------------------|---------------|---------|
|                               | Median / median ratio | (95% CI)    | p-value | Median/ median ratio | (95% CI)    | p-value | mean / mean difference | (95% CI)      | p-value |
| <b>baseline control</b>       | 7.33                  | (7.16-7.47) | 0.00    | 5.58                 | (5.47-5.67) | 0.00    | 76.9                   | (75.24-78.67) | 0.00    |
| <b>intervention</b>           | 0.85                  | (0.62-1.17) | 0.31    | 0.97                 | (0.71-1.31) | 0.82    | 0.57                   | (-1.81-2.96)  | 0.64    |
| <b>1 year</b>                 | 1.29                  | (1.08-1.52) | 0.00    | 1.12                 | (0.86-1.47) | 0.41    | -1.21                  | (-2.32--0.09) | 0.04    |
| <b>2 years</b>                | 1.62                  | (1.37-1.92) | 0.00    | 0.97                 | (0.73-1.29) | 0.82    | -0.63                  | (-1.79-0.53)  | 0.29    |
| <b>1 year * intervention</b>  | 1.05                  | (0.82-1.35) | 0.69    | 0.84                 | (0.56-1.25) | 0.38    | 0.72                   | (-0.88-2.31)  | 0.38    |
| <b>2 years * intervention</b> | 1.05                  | (0.81-1.35) | 0.73    | 0.81                 | (0.53-1.24) | 0.34    | 0.90                   | (-0.76-2.56)  | 0.29    |

For the first (Poisson), results are expressed in terms of median ratio (due to the logarithmic transformation); for the second (linear), they are expressed in terms of mean differences. In the unadjusted model the interaction between the intervention and the time (1 year and 2 years) gives the effect of intervention on the time change in the outcome.

Table S7. Results of the adjusted Poisson mixed effect model (IADL and ADL) and of the linear mixed effect model (WHOQOL-score).

|   | IADL                       |             |         | ADL                        |             |         | WHOQOL-OLD score             |               |         |
|---|----------------------------|-------------|---------|----------------------------|-------------|---------|------------------------------|---------------|---------|
|   | Median/<br>median<br>ratio | (95% CI)    | p-value | Median/<br>median<br>ratio | (95% CI)    | p-value | mean /<br>mean<br>difference | (95% CI)      | p-value |
| <b>baseline control</b>                   | 7.33                       | (7.16-7.47) | 0.00    | 5.58                       | (5.47-5.67) | 0.00    | 76.9                         | (75.24-78.67) | 0.00    |
| <b>intervention</b>                       | 0.85                       | (0.62-1.17) | 0.31    | 0.97                       | (0.71-1.31) | 0.82    | 0.57                         | (-1.81-2.96)  | 0.64    |
| <b>1 year</b>                             | 1.29                       | (1.08-1.52) | 0.00    | 1.12                       | (0.86-1.47) | 0.41    | -1.21                        | (-2.32--0.09) | 0.04    |
| <b>2 years</b>                            | 1.62                       | (1.37-1.92) | 0.00    | 0.97                       | (0.73-1.29) | 0.82    | -0.63                        | (-1.79-0.53)  | 0.29    |
| <b>1 year * intervention</b>              | 1.05                       | (0.82-1.35) | 0.69    | 0.84                       | (0.56-1.25) | 0.38    | 0.72                         | (-0.88-2.31)  | 0.38    |
| <b>2 years * intervention</b>             | 1.05                       | (0.81-1.35) | 0.73    | 0.81                       | (0.53-1.24) | 0.34    | 0.90                         | (-0.76-2.56)  | 0.29    |
| <b>baseline control, age&lt;80, woman</b> | 7.71                       | (7.54-7.82) | 0.00    | 5.52                       | (5.27-5.68) | 0.00    | 78.26                        | (75.38-81.1)  | 0.00    |
| <b>Intervention</b>                       | 0.48                       | (0.24-0.96) | 0.04    | 0.64                       | (0.34-1.19) | 0.16    | -0.63                        | (-4.68-3.47)  | 0.77    |
| <b>age&gt;80</b>                          | 2.24                       | (1.42-3.53) | 0.00    | 1.18                       | (0.75-1.87) | 0.47    | -2.58                        | (-5.67-0.49)  | 0.10    |
| <b>Men</b>                                | 2.36                       | (1.53-3.64) | 0.00    | 0.51                       | (0.31-0.83) | 0.01    | 0.53                         | (-2.54-3.73)  | 0.74    |
| <b>Intervention * age&gt;80</b>           | 1.53                       | (0.76-3.06) | 0.23    | 1.44                       | (0.72-2.85) | 0.30    | 1.73                         | (-2.7-6.08)   | 0.44    |
| <b>Intervention * Men</b>                 | 1.56                       | (0.84-2.89) | 0.16    | 1.49                       | (0.76-2.94) | 0.25    | 0.74                         | (-3.71-5.09)  | 0.74    |
| <b>1 year</b>                             | 1.29                       | (0.86-1.93) | 0.23    | 0.91                       | (0.54-1.55) | 0.74    | -2.32                        | (-4.32--0.32) | 0.02    |
| <b>2 years</b>                            | 2.12                       | (1.43-3.13) | 0.00    | 0.65                       | (0.37-1.16) | 0.14    | -1.59                        | (-3.64-0.46)  | 0.13    |
| <b>Intervention * 1 year</b>              | 1.48                       | (0.77-2.84) | 0.25    | 1.01                       | (0.44-2.33) | 0.98    | 1.94                         | (-0.95-4.84)  | 0.19    |
| <b>Intervention * 2 years</b>             | 1.72                       | (0.92-3.22) | 0.09    | 1.36                       | (0.57-3.27) | 0.49    | 2.75                         | (-0.21-5.7)   | 0.07    |
| <b>age&gt;80 * 1 year</b>                 | 1.05                       | (0.71-1.56) | 0.80    | 1.22                       | (0.68-2.2)  | 0.51    | 0.53                         | (-1.73-2.78)  | 0.65    |
| <b>age&gt;80 * 2 years</b>                | 0.88                       | (0.6-1.29)  | 0.52    | 1.58                       | (0.84-2.97) | 0.16    | 1.46                         | (-0.88-3.79)  | 0.22    |
| <b>1 year * Men</b>                       | 0.94                       | (0.66-1.34) | 0.74    | 1.31                       | (0.71-2.42) | 0.39    | 2.01                         | (-0.28-4.29)  | 0.09    |
| <b>2 years * Men</b>                      | 0.70                       | (0.49-0.99) | 0.04    | 1.35                       | (0.71-2.56) | 0.36    | 0.34                         | (-2.04-2.71)  | 0.78    |
| <b>1 year * intervention * age&gt;80</b>  | 0.75                       | (0.4-1.41)  | 0.37    | 0.86                       | (0.35-2.14) | 0.75    | -1.50                        | (-4.76-1.76)  | 0.37    |
| <b>2 years * intervention * age&gt;80</b> | 0.58                       | (0.32-1.08) | 0.09    | 0.49                       | (0.19-1.28) | 0.15    | -2.08                        | (-5.45-1.29)  | 0.23    |
| <b>1 year * intervention * men</b>        | 0.83                       | (0.5-1.4)   | 0.49    | 0.74                       | (0.3-1.81)  | 0.51    | -0.53                        | (-3.85-2.78)  | 0.76    |

|                                     |      |             |      |      |             |      |       |              |      |
|-------------------------------------|------|-------------|------|------|-------------|------|-------|--------------|------|
| <b>2 years * intervention * men</b> | 0.86 | (0.51-1.46) | 0.58 | 0.94 | (0.37-2.41) | 0.89 | -1.87 | (-5.33-1.58) | 0.29 |
|-------------------------------------|------|-------------|------|------|-------------|------|-------|--------------|------|

For the first (Poisson), results are expressed in terms of median ratio (due to the logarithmic transformation); for the second (linear), they are expressed in terms of mean differences.

In the adjusted model (bottom), interactions between time, intervention and covariates (age and sex) represent eventual age or sex differences in the above effect. All effects are kept into the model regardless to their significance. Graphs are predictions for each combination of arm, time and covariates obtained with each model.

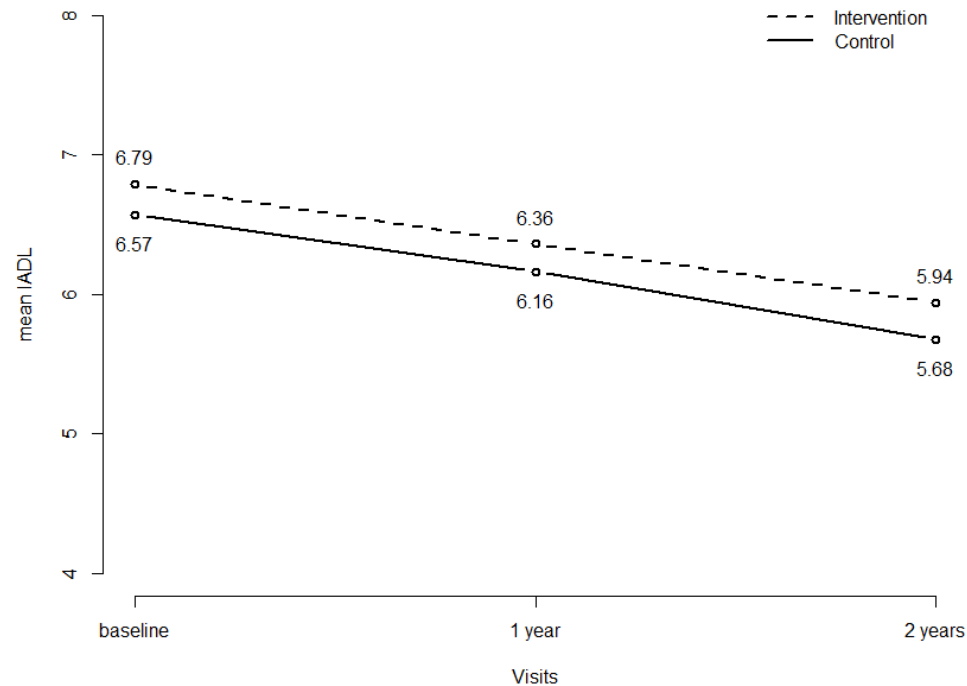


Figure S1. Evolution of independence in instrumental activities of daily living at baseline and after one and two years of the intervention and control arms; AGE3 study (N=414).

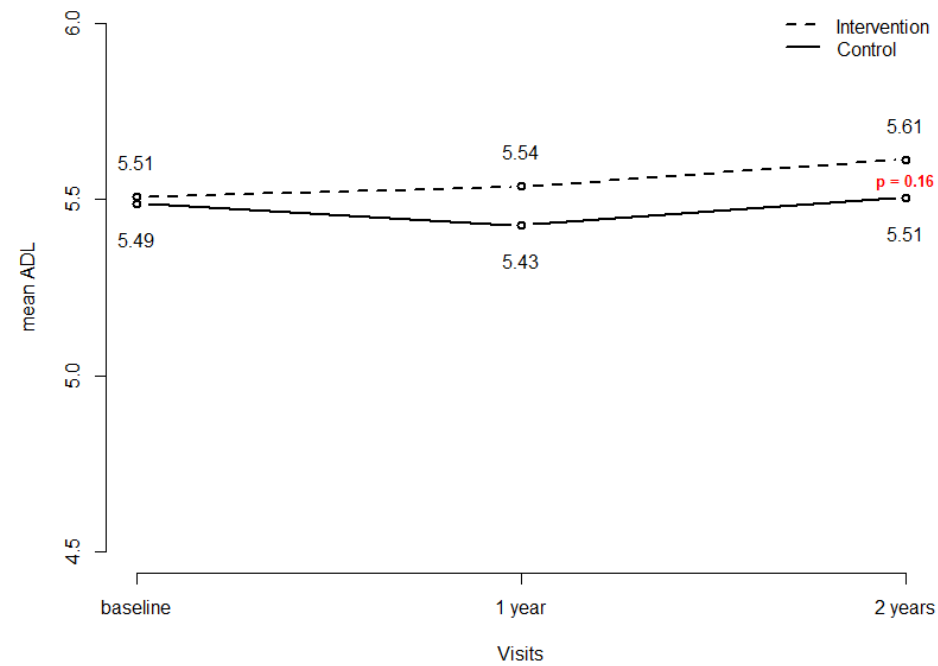


Figure S2. Evolution of independence in basic activities of daily living at baseline and after one and two years of the intervention and control arms; AGE3 study (N=415).

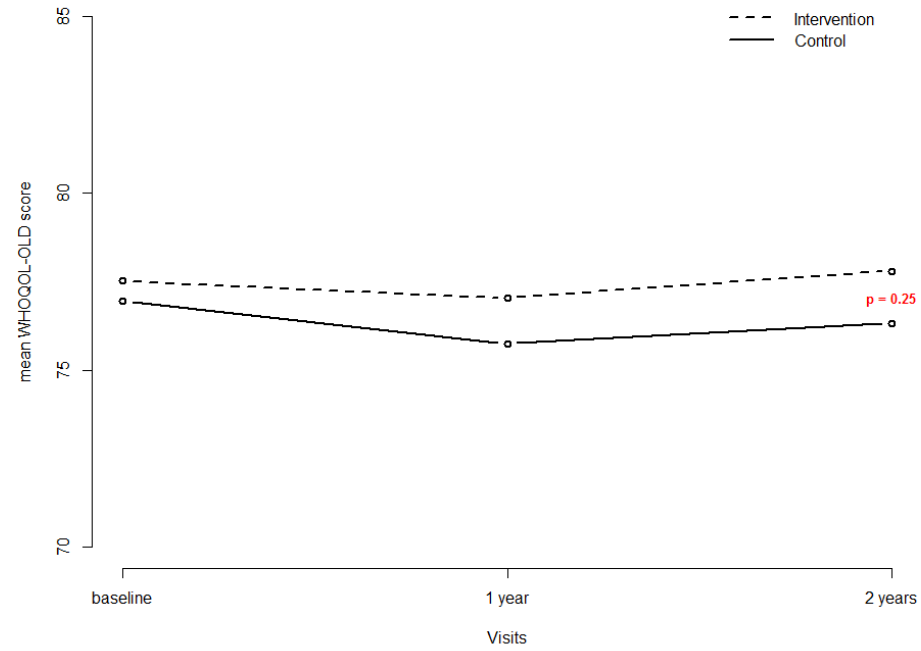


Figure S3. Evolution of the quality-of-life score (WHOQOL-OLD) at baseline and after one and two years of the intervention and control arms; AGE3 study (N=389)



## 5. Longitudinal analysis stratified by age and gender

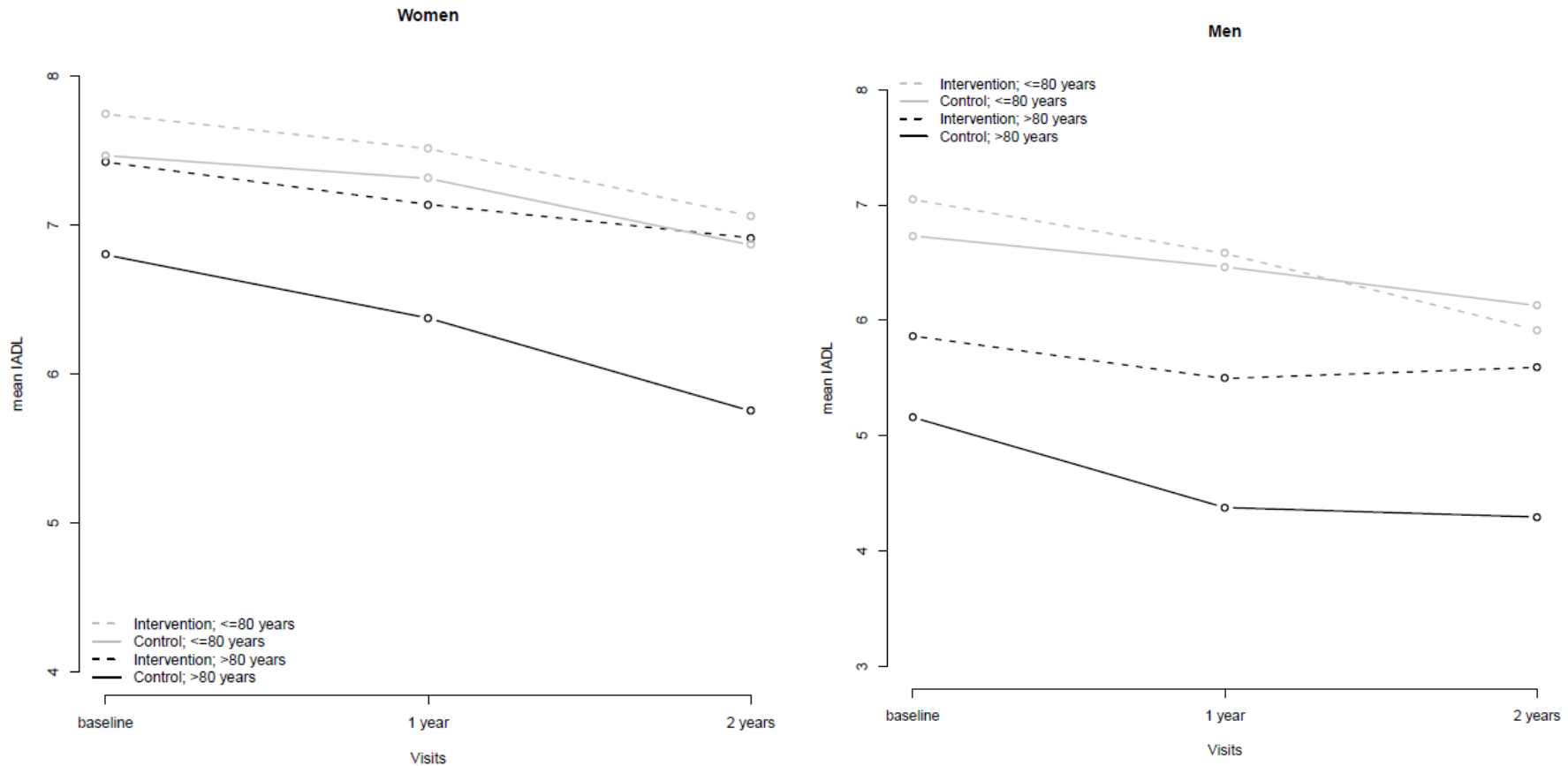


Figure S4. Evolution of independence in instrumental activities of daily living at baseline and after one and two years by gender and age category, in the intervention and control arms; AGE3 study.

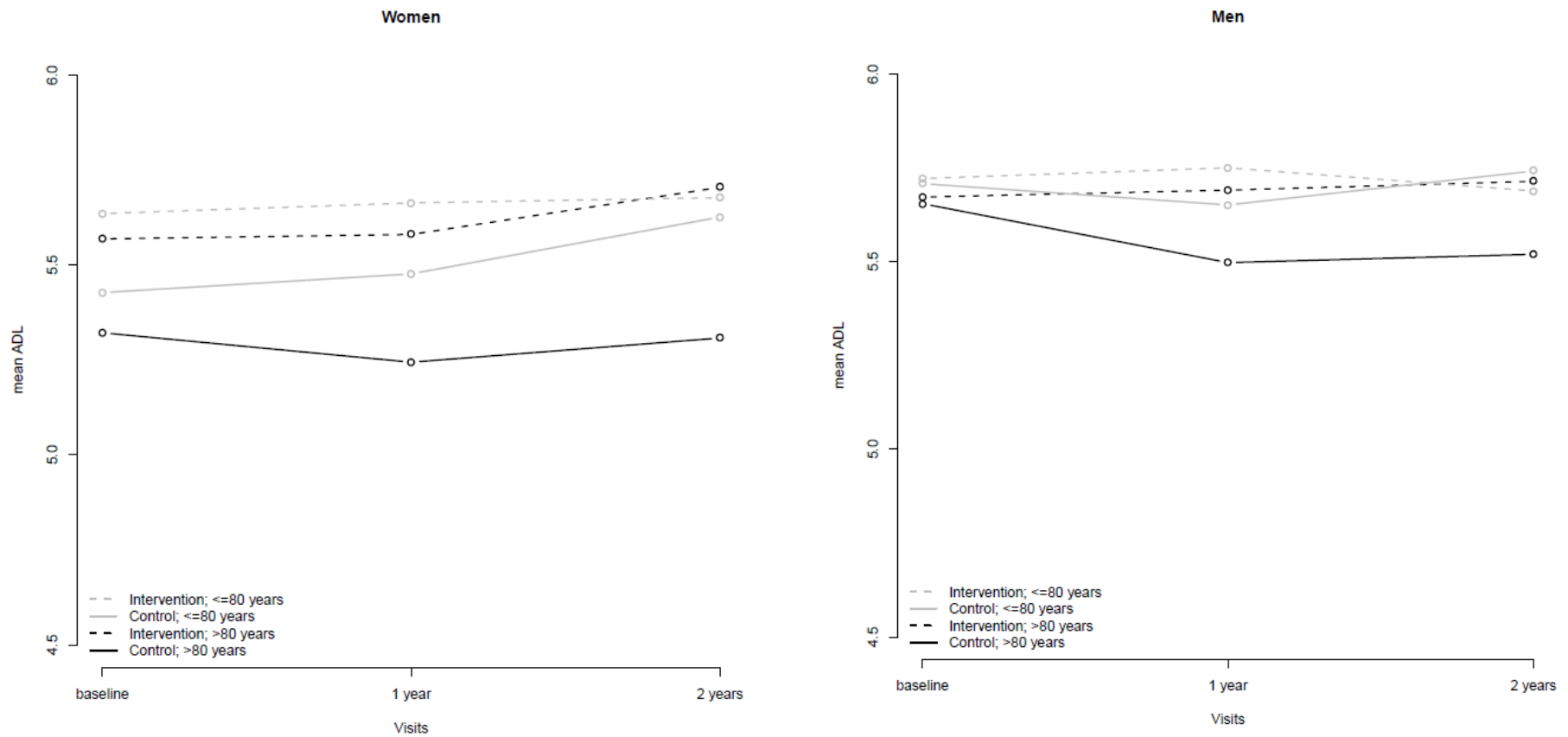


Figure S5. Evolution of independence in basic activities of daily living at baseline and after one and two years by gender and age category in the intervention and control arms; AGE3 study.

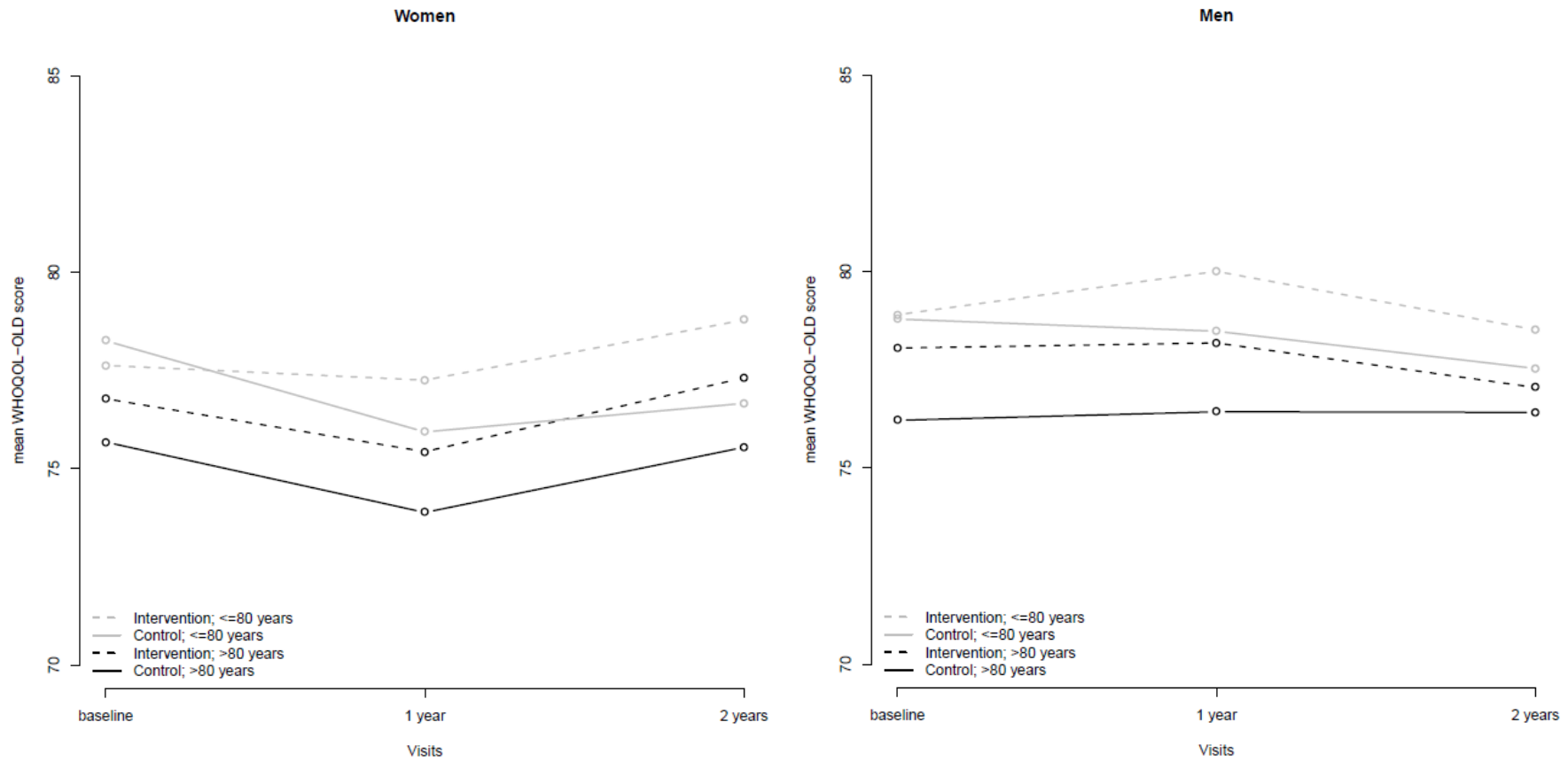


Figure S6. Evolution of the quality-of-life WHOQOL-OLD score at baseline and after one and two years by gender and age category in the intervention and control arms; AGE3 study.

## 6. Distribution of IADL and ADL loss

Table S8. Distribution of difference in instrumental and basic activities of daily living between baseline and two years. A negative difference corresponds to an increase.

|            | IADL (N=339) | ADL (N=347) |
|------------|--------------|-------------|
| - 4 points | 2 (0.6%)     | 0           |
| - 3 points | 1 (0.3%)     | 0           |
| - 2 points | 7 (2.1%)     | 1 (0.3%)    |
| - 1 points | 29 (8.6%)    | 70 (20.2%)  |
| 0 points   | 145 (42.8%)  | 225 (64.8%) |
| 1 point    | 82 (24.2%)   | 47 (13.5%)  |
| 2 points   | 40 (11.8%)   | 1 (0.3%)    |
| 3 points   | 18 (5.3%)    | 2 (0.6%)    |
| 4 points   | 5 (1.5%)     | 1 (0.3%)    |
| 5 points   | 6 (1.8%)     | 0           |
| 6 points   | 2 (0.6%)     | 0           |
| 7 points   | 2 (0.6%)     | NA          |

## 7. Details of instrumental and basic activities of daily living

Table S9. Instrumental activities of daily living (IADL) at baseline, after one- and two-years.

| Instrumental activities of daily living                            | Baseline      |                     |                          | One year      |                     |                          | Two years     |                     |                          |
|--|---------------|---------------------|--------------------------|---------------|---------------------|--------------------------|---------------|---------------------|--------------------------|
|  | Total (N=405) | Control arm (N=198) | Intervention arm (N=207) | Total (N=374) | Control arm (N=188) | Intervention arm (N=186) | Total (N=358) | Control arm (N=183) | Intervention arm (N=175) |
| <b>Ability to Use Telephone</b>                                    |               |                     |                          |               |                     |                          |               |                     |                          |
| 1 Operates telephone on own initiative; looks up and dials numbers | 347 (85.7)    | 165 (83.3)          | 182 (87.9)               | 307 (82.1)    | 145 (77.1)          | 162 (87.1)               | 309 (86.3)    | 151 (82.5)          | 158 (90.3)               |
| 1 Dials a few well-known numbers                                   | 46 (11.4)     | 24 (12.1)           | 22 (10.6)                | 44 (11.8)     | 27 (14.4)           | 17 (9.1)                 | 27 (7.5)      | 15 (8.2)            | 12 (6.9)                 |
| 1 Answers telephone, but does not dial                             | 5 (1.2)       | 3 (1.5)             | 2 (1.0)                  | 12 (3.2)      | 10 (5.3)            | 2 (1.1)                  | 10 (2.8)      | 7 (3.8)             | 3 (1.7)                  |
| 0 Does not use telephone at all                                    | 6 (1.5)       | 5 (2.5)             | 1 (0.5)                  | 11 (2.9)      | 6 (3.2)             | 5 (2.7)                  | 12 (3.4)      | 10 (5.5)            | 2 (1.1)                  |
| Missing  | 1             | 1                   |                          | 0             |                     |                          | 0             |                     |                          |
| <b>Shopping</b>  |               |                     |                          |               |                     |                          |               |                     |                          |
| 1 Takes care of all shopping needs independently                   | 307 (75.8)    | 147 (74.2)          | 160 (77.3)               | 255 (68.2)    | 126 (67.0)          | 129 (69.4)               | 216 (60.3)    | 105 (57.4)          | 111 (63.4)               |
| 0 Shops independently for small purchases                          | 44 (10.9)     | 20 (10.1)           | 24 (11.6)                | 49 (13.1)     | 18 (9.6)            | 31 (16.7)                | 66 (18.4)     | 33 (18.0)           | 33 (18.9)                |
| 0 Needs to be accompanied on any shopping trip                     | 25 (6.2)      | 15 (7.6)            | 10 (4.8)                 | 30 (8.0)      | 20 (10.6)           | 10 (5.4)                 | 30 (8.4)      | 15 (8.2)            | 15 (8.6)                 |
| 0 Completely unable to shop  | 28 (6.9)      | 15 (7.6)            | 13 (6.3)                 | 40 (10.7)     | 24 (12.8)           | 16 (8.6)                 | 45 (12.6)     | 30 (16.4)           | 15 (8.6)                 |
| Missing  | 1             | 1                   |                          | 0             |                     |                          | 1             |                     | 1                        |

| <b>Food Preparation</b> |   |            |            |            |            |            |            |            |            |            |
|-------------------------|---|------------|------------|------------|------------|------------|------------|------------|------------|------------|
| 1                       | Plans, prepares, and serves adequate meals independently                              | 293 (72.4) | 141 (71.2) | 152 (73.4) | 270 (72.2) | 134 (71.3) | 136 (73.1) | 239 (66.8) | 119 (65.0) | 120 (68.6) |
| 0                       | Prepares adequate meals if supplied with ingredients                                  | 48 (11.9)  | 23 (11.6)  | 25 (12.1)  | 32 (8.6)   | 15 (8.0)   | 17 (9.1)   | 51 (14.3)  | 24 (13.1)  | 27 (15.4)  |
| 0                       | Heats and serves prepared meals or prepares meals but does not maintain adequate diet | 45 (11.1)  | 22 (11.1)  | 23 (11.1)  | 38 (10.2)  | 20 (10.6)  | 18 (9.7)   | 27 (7.5)   | 15 (8.2)   | 15 (8.6)   |
| 0                       | Needs to have meals prepared and served   | 18 (4.4)   | 11 (5.6)   | 7 (3.4)    | 34 (9.1)   | 19 (10.1)  | 15 (8.1)   | 40 (11.2)  | 25 (13.7)  | 15 (8.6)   |
| Missing                 |   | 1          | 1          | 0          | 0          |            |            | 0          | 0          | 1          |
| <b>Housekeeping</b>     |   |            |            |            |            |            |            |            |            |            |
| 1                       | Maintains house alone with occasion assistance (heavy work)                           | 227 (56.1) | 101 (51.0) | 126 (60.9) | 218 (58.3) | 108 (57.5) | 110 (59.1) | 170 (47.5) | 91 (49.7)  | 79 (45.1)  |
| 1                       | Performs light daily tasks such as dishwashing, bed making                            | 116 (28.6) | 60 (30.3)  | 56 (27.1)  | 91 (24.3)  | 42 (22.3)  | 49 (26.3)  | 149 (41.6) | 66 (36.1)  | 83 (47.4)  |
| 1                       | Performs light daily tasks, but cannot maintain acceptable level of cleanliness       | 10 (2.5)   | 11 (5.6)   | 5 (2.4)    | 5 (1.3)    | 1 (0.5)    | 4 (2.2)    | 3 (0.8)    | 0 (0.0)    | 3 (1.7)    |
| 1                       | Needs help with all home maintenance tasks  | 16 (4.0)   | 11 (5.6)   | 5 (2.4)    | 20 (5.4)   | 13 (6.9)   | 7 (3.8)    | 4 (1.1)    | 2 (1.1)    | 2 (1.1)    |
| 0                       | Does not participate in any housekeeping tasks  | 35 (8.6)   | 19 (9.6)   | 16 (7.7)   | 40 (10.7)  | 24 (12.8)  | 16 (8.6)   | 31 (8.7)   | 23 (12.6)  | 8 (4.6)    |
| Missing                 |   | 1          | 1          | 0          | 0          |            |            | 1          | 1          | 0          |
| <b>Laundry</b>          |   |            |            |            |            |            |            |            |            |            |
| 1                       | Does personal laundry completely  | 289 (71.4) | 135 (68.2) | 154 (74.4) | 244 (65.2) | 116 (61.7) | 128 (68.8) | 221 (61.7) | 114 (62.3) | 107 (61.1) |

|   |  |            |            |            |            |            |            |            |            |            |
|---|--|------------|------------|------------|------------|------------|------------|------------|------------|------------|
| 1   | Launders small items, rinses socks, stockings, etc                             | 46 (11.4)  | 28 (14.1)  | 18 (8.7)   | 24 (6.4)   | 11 (5.9)   | 13 (7.0)   | 23 (6.4)   | 9 (4.9)    | 14 (8.0)   |
| 0   | All laundry must be done by others   | 67 (16.5)  | 34 (17.2)  | 33 (15.9)  | 101 (27.0) | 58 (30.9)  | 43 (23.1)  | 110 (30.7) | 58 (31.7)  | 52 (29.7)  |
| Missing                                   |  | 3          | 1          | 2          | 5          | 3          | 2          | 4          | 2          | 2          |
| <b>Mode of Transportation</b>             |  |            |            |            |            |            |            |            |            |            |
| 1   | Travels independently on public transportation or drives own car               | 337 (83.2) | 161 (81.3) | 176 (85.0) | 288 (77.0) | 144 (76.6) | 144 (77.4) | 260 (72.6) | 126 (68.9) | 134 (76.6) |
| 1   | Arranges own travel via taxi, but does not otherwise use public transportation | 6 (1.5)    | 3 (1.5)    | 3 (1.5)    | 10 (2.7)   | 5 (2.7)    | 5 (2.7)    | 7 (2.0)    | 3 (1.6)    | 4 (2.3)    |
| 1   | Travels on public transportation when assisted or accompanied by another       | 13 (3.2)   | 6 (3.0)    | 7 (3.4)    | 11 (2.9)   | 7 (3.7)    | 4 (2.2)    | 9 (2.5)    | 3 (1.6)    | 6 (3.4)    |
| 0   | Travel limited to taxi or automobile with assistance of another                | 40 (9.9)   | 23 (11.6)  | 17 (8.2)   | 50 (13.4)  | 25 (13.3)  | 25 (13.4)  | 65 (18.2)  | 40 (21.9)  | 25 (14.3)  |
| 0   | Does not travel at all   | 8 (2.0)    | 4 (2.0)    | 4 (1.9)    | 13 (3.5)   | 7 (3.7)    | 6 (3.2)    | 17 (4.8)   | 11 (6.0)   | 6 (3.4)    |
| Missing                                   |  | 1          | 1          | 0          | 2          | 0          | 2          | 0          |            |            |
| <b>Responsibility for Own Medications</b> |  |            |            |            |            |            |            |            |            |            |
| 1   | Is responsible for taking medication in correct dosages at correct time        | 360 (88.9) | 174 (87.9) | 186 (89.9) | 314 (84.0) | 158 (84.0) | 156 (83.9) | 283 (79.1) | 138 (75.4) | 145 (82.9) |
| 0   | Takes responsibility if medication is prepared in advance in separate dosages  | 36 (8.9)   | 17 (8.6)   | 19 (9.2)   | 40 (10.7)  | 16 (8.5)   | 24 (12.9)  | 60 (16.8)  | 35 (19.1)  | 25 (14.3)  |

|                                   |   |            |            |            |            |            |            |            |            |            |
|-----------------------------------|---|------------|------------|------------|------------|------------|------------|------------|------------|------------|
| 0                                 | Is not capable of dispensing own medication   | 8 (2.0)    | 6 (3.0)    | 2 (1.0)    | 18 (4.8)   | 12 (6.4)   | 6 (3.2)    | 13 (3.6)   | 9 (4.9)    | 4 (2.3)    |
| Missing                           |   | 1          | 1          | 0          | 2          | 2          | 0          | 2          | 1          | 1          |
| <b>Ability to Handle Finances</b> |   |            |            |            |            |            |            |            |            |            |
| 1                                 | Manages financial matters independently (budgets, writes checks, pays rent and bills, goes to bank); collects and keeps track of income | 305 (75.3) | 149 (75.3) | 156 (75.4) | 270 (72.2) | 131 (69.7) | 139 (74.7) | 258 (72.1) | 128 (70.0) | 130 (74.3) |
| 1                                 | Manages day-to-day purchases, but needs help with banking, major purchases, etc   | 32 (7.9)   | 13 (6.6)   | 19 (9.2)   | 23 (6.2)   | 8 (4.3)    | 15 (8.1)   | 20 (5.6)   | 10 (5.5)   | 10 (5.7)   |
| 0                                 | Incapable of handling money   | 67 (16.5)  | 35 (17.7)  | 32 (15.5)  | 78 (20.9)  | 46 (24.5)  | 32 (17.2)  | 75 (21.0)  | 42 (23.0)  | 33 (18.9)  |
| Missing                           |   | 1          | 1          | 0          | 3          | 3          | 0          | 5          | 3          | 2          |



Table S10. Basic activities of daily living at baseline, after one- and two-years.

| Basic activities of daily living   |   | Baseline      |                     |                          | One year      |                     |                          | Two years     |                     |                          |
|--|---|---------------|---------------------|--------------------------|---------------|---------------------|--------------------------|---------------|---------------------|--------------------------|
|  |   | Total (N=405) | Control arm (N=198) | Intervention arm (N=207) | Total (N=374) | Control arm (N=188) | Intervention arm (N=186) | Total (N=358) | Control arm (N=183) | Intervention arm (N=175) |
| <b>Bathing (sponge, shower, or bathtub)</b>  |   |               |                     |                          |               |                     |                          |               |                     |                          |
| 1  | Receives no assistance  | 373 (92.1)    | 179 (90.4)          | 194 (93.7)               | 330 (88.2)    | 162 (86.2)          | 168 (90.3)               | 324 (90.5)    | 164 (89.6)          | 160 (91.4)               |
| 1  | Receives assistance in bathing only one part of the body (such as back or a leg)                      | 17 (4.2)      | 11 (5.6)            | 6 (2.9)                  | 23 (6.2)      | 12 (6.4)            | 11 (5.9)                 | 21 (5.9)      | 9 (4.9)             | 12 (6.9)                 |
| 0  | Receives assistance in bathing more than one part of the body (or no bathed)                          | 14 (3.5)      | 7 (3.5)             | 7 (3.4)                  | 20 (5.4)      | 13 (6.9)            | 7 (3.8)                  | 13 (3.6)      | 10 (5.5)            | 3 (1.7)                  |
| Missing  |   | 1             | 1                   | 0                        | 1             | 1                   | 0                        | 0             | 0                   | 0                        |
| <b>Dressing (gets clothes from closets and drawers and gets dressed)</b>   |   |               |                     |                          |               |                     |                          |               |                     |                          |
| 1  | Receives no assistance  | 387 (95.6)    | 190 (96.0)          | 197 (95.2)               | 357 (95.5)    | 176 (93.6)          | 181 (97.3)               | 338 (94.4)    | 168 (91.8)          | 170 (97.1)               |
| 1  | Receives assistance only in tying shoes   | 10 (2.5)      | 3 (1.5)             | 7 (3.4)                  | 7 (1.9)       | 5 (2.7)             | 2 (1.1)                  | 9 (2.5)       | 5 (2.7)             | 4 (2.3)                  |
| 0  | Receives assistance in getting clothes or in getting dressed, or stays partly or completely undressed | 7 (1.7)       | 4 (2.0)             | 3 (1.5)                  | 9 (2.4)       | 6 (3.2)             | 3 (1.6)                  | 11 (3.1)      | 10 (5.5)            | 1 (0.6)                  |
| Missing  |   | 1             | 1                   | 0                        | 1             | 1                   | 0                        | 0             |                     |                          |
| <b>Going to toilet (for bowel and urine elimination; cleaning self after elimination, and arranging clothes)</b> |   |               |                     |                          |               |                     |                          |               |                     |                          |
| 1  | Receives no assistance  | 404 (99.8)    | 197 (99.5)          | 207 (100.0)              | 368 (98.4)    | 184 (97.9)          | 184 (98.9)               | 353 (98.6)    | 178 (97.3)          | 175 (100.0)              |
| 0  | Receives assistance in going to "toilet room" or in cleaning self or in arranging clothes             | 0             | 0                   | 0                        | 5 (1.3)       | 3 (1.6)             | 2 (1.1)                  | 3 (0.8)       | 3 (1.6)             | 0 (0.0)                  |

|  |  |            |            |            |            |            |             |            |            |             |
|--|--|------------|------------|------------|------------|------------|-------------|------------|------------|-------------|
| 0  | Does not go to the room termed "toilet" for the elimination process                                | 0          | 0          | 0          | 0          | 0          | 0           | 2 (0.6)    | 2 (1.1)    | 0 (0.0)     |
| Missing  |  | 1          | 1          | 0          | 1          | 1          | 0           | 0          |            |             |
| <b>Transfer (moves in and out of bed or chair)</b>                                 |  |            |            |            |            |            |             |            |            |             |
| 1  | Receives no assistance   | 398 (98.3) | 194 (98.0) | 204 (98.6) | 367 (98.1) | 183 (97.3) | 184 (98.9)  | 355 (99.2) | 180 (98.4) | 175 (100.0) |
| 0  | Moves in and out of bed or chair with assistance   | 4 (1.0)    | 2 (1.0)    | 2 (1.0)    | 6 (1.6)    | 4 (2.1)    | 2 (1.1)     | 3 (0.8)    | 3 (1.6)    | 0 (0.0)     |
| 0  | Does not get out of bed  | 0          | 0          | 0          | 0          | 0          | 0           | 0          | 0          | 0           |
| Missing  |  | 3          | 2          | 1          | 1          | 1          | 0           | 0          | 0          | 0           |
| <b>Continence (physiological process of elimination from bladder and bowel)</b>    |  |            |            |            |            |            |             |            |            |             |
| 1  | Controls urination and bowel movement completely by self   | 225 (55.6) | 108 (54.6) | 118 (56.5) | 216 (57.8) | 101 (53.7) | 115 (61.8)  | 236 (65.9) | 121 (66.1) | 115 (65.7)  |
| 0  | Has occasional "accidents"   | 158 (39.0) | 76 (38.4)  | 82 (39.6)  | 134 (35.8) | 69 (36.7)  | 65 (35.0)   | 104 (29.1) | 48 (26.2)  | 56 (32.0)   |
| 0  | Supervision helps keep urine or bowel control; catheter is used or is incontinence                 | 20 (4.9)   | 13 (6.6)   | 7 (3.4)    | 19 (5.1)   | 14 (7.5)   | 5 (2.7)     | 18 (5.0)   | 14 (7.7)   | 4 (2.3)     |
| Missing  |  | 2          | 1          | 1          | 5          | 4          | 1           | 0          |            |             |
| <b>Feeding (process of getting food from a plate or equivalent into the mouth)</b> |  |            |            |            |            |            |             |            |            |             |
| 1  | Receives no assistance   | 400 (98.8) | 195 (98.5) | 205 (99.0) | 373 (99.7) | 187 (99.5) | 186 (100.0) | 355 (99.2) | 181 (98.9) | 174 (99.4)  |
| 1  | Feeds self except for getting assistance in cutting meat or buttering bread                        | 3 (0.7)    | 2 (1.0)    | 1 (0.5)    | 0          | 0          | 0           | 3 (0.8)    | 2 (1.1)    | 1 (0.6)     |
| 0  | Receives assistance in feeding or is fed partly or completely by using tubes or intravenous fluids | 1 (0.3)    | 0 (0.0)    | 1 (0.5)    | 0          | 0          | 0           | 0          | 0          | 0           |
| Missing  |  | 1          | 1          | 0          | 1          | 1          | 0           | 0          |            |             |

## 8. Adhesion to intervention

Table S11. Use of the active geriatric evaluation, per geriatric syndromes screened and management plan completed, per year of study

|                           | Baseline evaluation (N=179) |            | First year management plan (N=148) |        | One-year evaluation (N=126) |           | Second year management plan (N=115) |        |
|---------------------------|-----------------------------|------------|------------------------------------|--------|-----------------------------|-----------|-------------------------------------|--------|
|                           | N missing/incomplete        | n (%)      | n                                  | %      | N missing/incomplete        | n (%)     | n                                   | %      |
| Functional loss           | 1                           | 40 (22.4)  |                                    |        | 0                           | 32 (25.4) |                                     |        |
| Osteoporosis              | 15                          | 113 (63.1) | 106                                | (71.6) | 12                          | 78 (61.9) | 78                                  | (67.8) |
| Urinary Incontinence      | 3                           | 94 (52.5)  | 82                                 | (55.4) | 6                           | 69 (54.8) | 69                                  | (60.0) |
| Falls / walking imbalance | 0                           | 80 (44.7)  | 68                                 | (46.0) | 0                           | 49 (38.9) | 47                                  | (40.9) |
| Mood disorder             | 3                           | 63 (35.2)  | 56                                 | (37.8) | 2                           | 32 (25.4) | 34                                  | (29.6) |
| Visual impairment         | 17                          | 48 (26.8)  | 44                                 | (29.7) | 14                          | 31 (24.6) | 32                                  | (27.8) |
| Hearing impairment        | 16                          | 44 (24.6)  | 41                                 | (27.7) | 8                           | 31 (24.6) | 32                                  | (27.8) |
| Cognitive disorder        | 8                           | 38 (21.2)  | 37                                 | (25.0) | 11                          | 22 (17.5) | 27                                  | (23.5) |
| Undernutrition            | 11                          | 6 (3.4)    | 6                                  | (4.1)  | 25                          | 2 (1.6)   | 3                                   | (2.6)  |

Table S12. Summary of adherence to different sections of the management plan. Adherence was estimated for each section of management plan. Total adherence was estimated per patient and per item. Number with management plan can be different from number with positive screening because physicians could reclassify the patient after screening to open the corresponding management plan.

| Sections of the AGE tool               | Positive screening at baseline (N=179) | N with management plan (year 1) | n (%) adherent | n (%) non-adherent | n (%) missing  | Positive screening at one-year (N=126) | N with management plan (year 2) | n (%) adherent | n (%) non-adherent | n (%) missing  | Mean number of items adhered to | % adherent items         | %management plans with at least >50% adherent items |
|--|--|---------------------------------|----------------|--------------------|----------------|--|---------------------------------|----------------|--------------------|----------------|---------------------------------|--------------------------|---|
| Osteoporosis (max 5 items)             | 113 (63.1)                             | 106                             | 9 (8.5)        | 69 (65.1)          | 28 (26.4)      | 78 (61.9)                              | 78                              | 8 (10.3)       | 51 (65.4)          | 19 (24.4)      | 1.9                             | 38.8%                    | 32.1%   |
| Urinary incontinence (max 11 items)    | 94 (52.5)                              | 82                              | 6 (7.3)        | 72 (87.8)          | 4 (4.9)        | 69 (54.8)                              | 69                              | 13 (18.8)      | 55 (79.7)          | 1 (1.5)        | 7.1                             | 64.1%                    | 71.5%   |
| Falls or gait imbalance (max 15 items) | 80 (44.7)                              | 68                              | 0 (0.0)        | 66 (97.1)          | 2 (2.9%)       | 49 (38.9)                              | 47                              | 0 (0.0)        | 47 (100.0)         | 0 (0.0)        | 9.3                             | 64.6%                    | 72.2%   |
| Mood disorder (max 7 items)            | 63 (35.2)                              | 56                              | 41 (73.2)      | 15 (26.8)          | 0 (0.0)        | 32 (25.4)                              | 34                              | 23 (67.7)      | 11 (32.4)          | 0 (0.0)        | 3.0                             | 83.3%                    | 85.4%   |
| Visual impairment (max 3 items)        | 48 (26.8)                              | 44                              | 7 (15.9)       | 35 (79.6)          | 2 (4.6)        | 31 (24.6)                              | 32                              | 5 (15.6)       | 25 (78.1)          | 2 (6.3)        | 1.3                             | 41.7%                    | 35.5%   |
| Hearing impairment (max 3 items)       | 44 (24.6)                              | 41                              | 12 (29.3)      | 27 (65.9)          | 2 (4.9)        | 31 (24.6)                              | 32                              | 11 (34.4)      | 21 (65.6)          | 0 (0.0)        | 1.8                             | 58.9%                    | 60.2%   |
| Cognitive disorder (max 11 items)      | 38 (21.2)                              | 37                              | 7 (18.9)       | 28 (75.7)          | 2 (5.4)        | 22 (17.5)                              | 27                              | 7 (25.9)       | 18 (66.7)          | 2 (7.4)        | 4.8                             | 68.8%                    | 73.4%   |
| Undernutrition (max 8 items)           | 6 (3.4)                                | 6                               | 0 (0.0)        | 6 (100.0)          | 0 (0.0)        | 2 (1.6)                                | 3                               | 0 (0.0)        | 3 (100.0)          | 0 (0.0)        | 5.4                             | 68.1%                    | 77.8%   |
| <b>Total</b>                           | <b>179 (82.5)</b>                      | <b>148</b>                      | <b>8 (5.4)</b> | <b>131 (88.5)</b>  | <b>9 (6.1)</b> | <b>126 (58.1)</b>                      | <b>115</b>                      | <b>8 (7.0)</b> | <b>103 (89.6)</b>  | <b>4 (3.5)</b> | <b>10.1 / 16.9</b>              | <b>59.9% (3347/5585)</b> | <b>48.2% (159/330)</b>                              |

Table S13. Details of the assessment items of the active geriatric evaluation, at baseline and after one year.

| Section of brief assessment tool | Item   | n/N baseline | %    | n/N 1 year | %    |
|----------------------------------|--|--------------|------|------------|------|
| <b>Functionality</b>             | Can you dress yourself? Number answering "no"  | 4/178        | 2.1  | 2/126      | 1.6  |
|                                  | Can you prepare your meals alone? Number answering "no"                                      | 12/172       | 7.0  | 13/121     | 10.7 |
|                                  | Can you do your own shopping? Number answering "no"  | 22/175       | 12.6 | 15/123     | 12.2 |
|                                  | Can you make your payments alone? Number answering "no"                                      | 29/175       | 16.6 | 22/121     | 18.2 |
| <b>Urinary incontinence</b>      | Do you have difficulty holding in your urine or feel urge to urinate?                        | 57/174       | 32.8 | 35/120     | 29.2 |
|                                  | Do you sometimes find it difficult to reach the toilet in time?                              | 41/174       | 23.6 | 25/120     | 20.8 |
|                                  | Do you have involuntary urine loss when coughing or on effort?                               | 50/176       | 28.4 | 31/120     | 25.8 |
|                                  | Do you sometimes wear protection pads?   | 66/176       | 37.5 | 53/120     | 44.2 |
| <b>Mood disorder</b>             | Over the last 2 weeks, have you been bothered by feeling down, depressed or hopeless         | 58/176       | 33.0 | 30/124     | 24.2 |
|                                  | Over the last 2 weeks, have you been bothered by little interest or pleasure in doing things | 38/176       | 21.6 | 18/124     | 14.5 |
| <b>Cognitive impairment</b>      | Clock drawing test: number <2 points   | 45/172       | 26.2 | 29/116     | 25.0 |
|                                  | 3-word registration : number with <3 points  | 94/173       | 54.3 | 51/120     | 42.5 |
| <b>Visual impairment</b>         | Near vision pocket card: right eye not ok  | 34/163       | 20.9 | 24/112     | 21.4 |
|                                  | Near vision pocket card: left eye not ok   | 34/163       | 20.9 | 22/112     | 19.6 |
| <b>Hearing impairment</b>        | Whispering test: right ear not ok  | 36/163       | 22.1 | 23/117     | 19.7 |
|                                  | Whispering test: left ear not ok   | 33/163       | 20.3 | 29/117     | 24.8 |
| <b>Gait and balance</b>          | Did you fall during the past year ?  | 46/177       | 26.0 | 30/125     | 24.0 |
|                                  | On observation, does your patient present gait instability ?                                 | 62/177       | 35.0 | 38/124     | 30.7 |
| <b>Osteoporosis</b>              | Does your patient have a history of osteoporotic fracture ?                                  | 19/171       | 11.1 | 16/118     | 13.6 |
|                                  | Height loss suspect of osteoporosis (≥ 4 cm in women and ≥ 6 cm in men since age 25)         | 65/133       | 48.9 | 32/85      | 37.7 |
|                                  | Wall-occiput distance >0cm   | 51/119       | 42.9 | 36/79      | 45.6 |
|                                  | rib-pelvis distance distance <2 fingers  | 35/109       | 32.1 | 24/74      | 32.4 |
| <b>Undernutrition</b>            | Weight loss >5% past month   | 4/75         | 5.3  | 2/55       | 3.6  |
|                                  | Weight loss >10% past 6 months   | 3/96         | 3.1  | 0/72       | 0.0  |

Table S14. Details of adherence to the different recommendations of the management plan. NA = Not applicable. In bold: items considered for adherence calculation.

|   | Done at 1 year        | Not done, patient reason | Not done, physician reason | Not indicated | Missing information | Done at 2 years        | Not done, patient reason | Not done, physician reason | Not indicated | Missing information |
|---|-----------------------|--------------------------|----------------------------|---------------|---------------------|------------------------|--------------------------|----------------------------|---------------|---------------------|
| <b>Urinary incontinence</b>   | N=82                  |                          |                            |               |                     | N=69                   |                          |                            |               |                     |
| Complete focused medical history and examination: sensation of emptying, dysuria, pollakiuria, urogynecological problems, urinary retention, prolapse, rectal examination | 56 (68.3)             | 6 (7.3)                  | 19 (23.2)                  | NA            | 1 (1.2)             | 45 (65.2)              | 5 (7.3)                  | 18 (26.1)                  | NA            | 1 (1.5)             |
| Voiding calendar (timing of mictions, nycturia)   | 48 (58.5)             | 9 (11.0)                 | 24 (29.3)                  | NA            | 1 (1.2)             | 46 (66.7)              | 6 (8.7)                  | 16 (23.2)                  | NA            | 1 (1.5)             |
| <b>Targeted clinical examination (urinary retention, prolapse, rectal examination)</b>  | 13 (15.9)             | 15 (18.3)                | 52 (63.4)                  | NA            | 2 (2.4)             | 10 (14.5)              | 13 (18.8)                | 44 (63.8)                  | NA            | 2 (2.9)             |
| <b>Radiological examination for post-miction residue</b>  | 2 (2.4)               | 6 (7.3)                  | 35 (42.7)                  | 38 (46.3)     | 1 (1.2)             | 1 (1.5)                | 5 (7.3)                  | 26 (37.7)                  | 36 (52.2)     | 1 (1.5)             |
| <b>Urinary dipstick</b>   | 17 (20.7)             | 4 (4.9)                  | 30 (36.6)                  | 30 (36.6)     | 1 (1.2)             | 11 (15.9)              | 4 (5.8)                  | 25 (36.2)                  | 28 (40.6)     | 1 (1.5)             |
| <b>Review medication (diuretics, hypnotics, anticholinergics)</b>   | 40 (48.8)             | 2 (2.4)                  | 22 (26.8)                  | 16 (19.5)     | 2 (2.4)             | 29 (42.0)              | 3 (4.4)                  | 17 (24.6)                  | 18 (26.1)     | 2 (2.9)             |
| Prescription of urinary protection pads   | 43 (2.4)              | 13 (15.9)                | 24 (29.3)                  | NA            | 2 (2.4)             | 41 (59.4)              | 10 (14.5)                | 17 (24.6)                  | NA            | 1 (1.5)             |
| Voiding behavioural hygiene   | 38 (46.3)             | 9 (11.0)                 | 32 (39.0)                  | NA            | 3 (3.7)             | 32 (46.4)              | 3 (4.4)                  | 33 (47.8)                  | NA            | 1 (1.5)             |
| <b>Consider anticholinergic / alpha-blocker</b>   | 10 (12.2)             | 2 (2.4)                  | 19 (23.2)                  | 49 (59.8)     | 2 (2.4)             | 8 (11.6)               | 4 (5.8)                  | 19 (27.5)                  | 37 (53.6)     | 1 (1.5)             |
| <b>Refer to gynaecologist / urologist for specialty care / eg surgery</b>   | 10 (12.2)             | 7 (8.5)                  | 22 (26.8)                  | 40 (48.8)     | 3 (3.7)             | 15 (21.7)              | 7 (10.1)                 | 16 (23.2)                  | 29 (42.0)     | 2 (2.9)             |
| <b>Consider specialised physiotherapy and rehabilitation</b>  | 5 (6.1)               | 4 (4.9)                  | 30 (36.6)                  | 40 (48.8)     | 3 (3.7)             | 4 (5.8)                | 9 (13.0)                 | 20 (29.0)                  | 34 (49.3)     | 2 (2.9)             |
| <b>Mood disorder</b>  | Done at 1 year (N=56) | Not done, patient reason | Not done, physician reason | Not indicated | Missing information | Done at 2 years (N=34) | Not done, patient reason | Not done, physician reason | Not indicated | Missing information |
| <b>Complete medical history</b>   | 44 (78.6)             | 2 (3.6)                  | 10 (17.9)                  | NA            | 0                   | 28 (82.4)              | 0                        | 6 (17.7)                   | NA            | 0                   |
| Perform eventually Geriatric Depression Scale (short form)  | 15 (26.8)             | 6 (10.7)                 | 35 (62.5)                  | NA            | 0                   | 6 (17.7)               | 4 (11.8)                 | 24 (70.6)                  | NA            | 0                   |
| <b>Review psychotropic medication</b>   | 45 (80.4)             | 2 (3.6)                  | 8 (14.3)                   | NA            | 1 (1.8)             | 29 (85.3)              | 1 (2.9)                  | 3 (8.8)                    | NA            | 1 (2.9)             |

|   |                       |                          |                            |               |                     |                        |                          |                            |               |                     |  |
|---|-----------------------|--------------------------|----------------------------|---------------|---------------------|------------------------|--------------------------|----------------------------|---------------|---------------------|--|
| Mood disorder confirmed or unclear  | (N=32)                |                          |                            |               | (N=20)              |                        |                          |                            |               |                     |  |
| - <b>Initiate depression follow-up</b>  | 23 (71.9)             | 5 (15.6)                 | 4 (12.5)                   | NA            | 0                   | 15 (75.0)              | 4 (20.0)                 | 1 (5.0)                    | NA            | 0                   |  |
| - Antidepressant medication   | 12 (37.5)             | 9 (28.1)                 | 2 (6.3)                    | NA            | 9                   | 11 (55.0)              | 2 (10.0)                 | 3 (15.0)                   | NA            | 4 (20.0)            |  |
| - <b>Assess alcohol consumption</b>   | 30 (93.7)             |                          |                            |               | 2 (6.3)             | 19 (95.0)              |                          |                            |               | 1 (5.0)             |  |
| - <b>Motivational intervention on alcohol consumption</b>   | 2 (6.3)               | 0                        | 1 (3.1)                    | 27 (84.4)     | 2 (6.3)             | 1 (5.0)                | 0                        | 0                          | 17 (85.0)     | 1 (5.0)             |  |
| <b>Cognitive disorder</b>   | Done at 1 year (N=37) | Not done, patient reason | Not done, physician reason | Not indicated | Missing information | Done at 2 years (N=27) | Not done, patient reason | Not done, physician reason | Not indicated | Missing information |  |
| Medical history, compare to functional status   | 31 (83.8)             | 0                        | 5 (13.5)                   | NA            | 1 (2.7)             | 23 (85.2)              | 1 (3.7)                  | 2 (7.4)                    | NA            | 1 (3.7)             |  |
| MMSE or Moka test   | 17 (46.0)             | 2 (5.4)                  | 17 (46.0)                  | NA            | 1 (2.7)             | 12 (44.4)              | 3 (11.1)                 | 12 (44.4)                  | NA            | 1 (3.7)             |  |
| <b>Cognitive disorder confirmed or unclear</b>  | <b>(N=26)</b>         |                          |                            |               |                     | <b>(N=19)</b>          |                          |                            |               |                     |  |
| Assess driving ability  | 3 (11.5)              | 0                        | 4 (15.4)                   | NA            | 19                  | 0                      | 0                        | 0                          | 0             | 19                  |  |
| Refer to memory clinic/geriatrician, +/- MRI)   | 3 (11.5)              | 3 (11.5)                 | 20 (76.9)                  | NA            | 0                   | 2 (10.5)               | 3 (15.8)                 | 13 (68.4)                  | NA            | 1 (5.3)             |  |
| Lab tests: full blood count, HbA1c, creatinine clearance, ASAT, ALAT, Gamma-GT, Na, K, Ca, vitamin B12, folic acid, TSH | 22 (84.6)             | -                        | 3 (11.5)                   | NA            | 1 (3.9)             | 17 (89.5)              | -                        | 2 (10.5)                   | NA            | 0                   |  |
| Review medication ( <b>diuretics, psychotropics, opiates, anticholinergics</b> )  | 24 (92.3)             | 0                        | 2 (7.7)                    | NA            | 0                   | 18 (94.7)              | 0                        | 1 (5.3)                    | NA            | 0                   |  |
| Assess home care support  | 15 (57.7)             | 6 (23.1)                 | 5 (19.2)                   | NA            | 0                   | 11 (57.9)              | 3 (15.8)                 | 5 (26.3)                   | NA            | 1                   |  |
| Meet family / network   | 12 (46.2)             | 6 (23.1)                 | 7 (26.9)                   | 1 (3.9)       | 0                   | 13 (68.4)              | 2 (10.5)                 | 4 (21.1)                   | NA            | 0                   |  |
| <b>Prepare advance directives</b>   | 6 (23.1)              | 8 (30.8)                 | 12 (46.2)                  | NA            | 0                   | 5 (26.3)               | 7 (36.8)                 | 7 (36.8)                   | NA            | 0                   |  |
| Consider specific treatment according to diagnosis  | 4 (15.4)              | 5 (19.2)                 | 0                          | 17 (65.4)     | 0                   | 1 (5.3)                | 1 (5.3)                  | 5 (26.3)                   | 12 (63.2)     | 0                   |  |
| <b>Adapt medication</b>   | 6 (23.1)              | 0                        | 4 (15.4)                   | 14 (53.9)     | 2 (7.7)             | 7 (36.8)               | 1 (5.3)                  | 4 (21.1)                   | 6 (31.6)      | 1                   |  |
| <b>Procognitive treatment (acetylcholinesterase inhibitors, memantine, ev. ginkgo biloba)</b>                           | 2 (7.7)               | 0                        | 12 (46.2)                  | 12 (46.2)     | 0                   | 3 (15.8)               | 1 (5.3)                  | 11 (57.9)                  | 4 (21.1)      | 0                   |  |

| <b>Visual impairment</b>  | Done at 1 year (N=44) | Not done, patient reason | Not done, physician reason | Not indicated | Missing information | Done at 2 years (N=32) | Not done, patient reason | Not done, physician reason | Not indicated | Missing information |
|---|-----------------------|--------------------------|----------------------------|---------------|---------------------|------------------------|--------------------------|----------------------------|---------------|---------------------|
| Complete visual acuity assessment (Snellen chart)                       | 11 (25.0)             | 3 (6.8)                  | 28 (63.6)                  | NA            | 2 (4.6)             | 8 (25.0)               | 1 (3.1)                  | 21 (65.6)                  | NA            | 2 (6.3)             |
| Refer to ophthalmologist for full assessment (e.g. cataracts, glaucoma) | 26 (59.1)             | 3 (6.8)                  | 13 (29.6)                  | NA            | 2 (4.6)             | 21 (65.6)              | 1 (3.1)                  | 8 (25.0)                   | NA            | 2 (6.3)             |
| <b>Ergo therapist to check indication for auxiliary means</b>           | 4 (9.1)               | 8 (18.2)                 | 30 (68.2)                  | NA            | 2 (4.6)             | 7 (21.9)               | 2 (6.3)                  | 21 (65.6)                  | NA            | 2 (6.3)             |
| <b>Hearing impairment</b>   | Done at 1 year (N=41) | Not done, patient reason | Not done, physician reason | Not indicated | Missing information | Done at 2 years (N=32) | Not done, patient reason | Not done, physician reason | Not indicated | Missing information |
| Perform otoscopy (cerumen impaction)                                    | 29 (70.7)             | 1 (2.4)                  | 10 (24.4)                  | NA            | 1 (2.4)             | 16 (50.0)              | 1 (3.1)                  | 15 (46.9)                  | NA            | 0                   |
| Refer for audiometry  | 13 (31.7)             | 8 (19.5)                 | 19 (46.3)                  | NA            | 1 (2.4)             | 10 (31.3)              | 9 (28.2)                 | 13 (40.6)                  | NA            | 0                   |
| Prescription of hearing aid   | 12 (29.3)             | 9 (22.0)                 | 18 (43.9)                  | NA            | 2 (4.9)             | 10 (31.3)              | 11 (34.4)                | 11 (34.4)                  | NA            | 0                   |
| <b>Gait and balance</b>   | Done at 1 year (N=68) | Not done, patient reason | Not done, physician reason | Not indicated | Missing information | Done at 2 years (N=47) | Not done, patient reason | Not done, physician reason | Not indicated | Missing information |
| Cardiovascular clinical examination                                     | 52 (76.5)             | 1 (1.5)                  | 13 (19.1)                  | NA            | 2 (2.9)             | 38 (80.9)              | 0                        | 9 (19.2)                   | NA            | 0                   |
| Schellong test  | 13 (19.1)             | 5 (7.4)                  | 47 (69.1)                  | NA            | 3 (4.4)             | 9 (19.2)               | 8 (17.0)                 | 30 (63.8)                  | NA            | 0                   |
| Neurological clinical examination                                       | 38 (55.9)             | 1 (1.5)                  | 27 (39.7)                  | NA            | 2 (2.9)             | 31 (66.0)              | 3 (6.4)                  | 13 (27.7)                  | NA            | 0                   |
| Examine feet and shoes  | 49 (72.1)             | 0                        | 17 (25.0)                  | NA            | 2 (2.9)             | 31 (66.0)              | 3 (6.4)                  | 12 (25.5)                  | NA            | 1 (2.1)             |
| Refer to specialty care if needed                                       | 12 (17.7)             | 2 (2.9)                  | 20 (29.4)                  | 32 (47.1)     | 2 (2.9)             | 12 (25.5)              | 0                        | 8 (17.0)                   | 27 (57.5)     | 0                   |
| Review medication ( <b>psychotropics, hypotensives</b> )                | 53 (77.9)             | 0                        | 12 (17.7)                  | NA            | 3 (4.4)             | 40 (85.1)              | 0                        | 7 (14.9)                   | NA            | 0                   |
| Assess alcohol consumption  | 24 (35.3)             |                          |                            |               | 44 (64.7)           | 14 (29.8)              |                          |                            |               | 33 (70.2)           |
| Check calcium and vitamin D   | 36 (52.9)             | 2 (2.9)                  | 28 (41.2)                  | NA            | 2 (2.9)             | 26 (55.3)              | 1 (2.1)                  | 19 (40.4)                  | NA            | 1 (2.1)             |
| Home hazard assessment (ergo therapist)                                 | 15 (22.1)             | 17 (25.0)                | 34 (50.0)                  | NA            | 2 (2.9)             | 15 (31.9)              | 10 (21.3)                | 20 (42.6)                  | NA            | 2 (4.3)             |
| <b>Assess auxiliary means, telealarm system</b>                         | 21 (30.9)             | 17 (25.0)                | 28 (41.2)                  | NA            | 2 (2.9)             | 20 (42.6)              | 14 (29.8)                | 13 (27.7)                  | NA            | 0                   |
| Assess home care support  | 33 (48.5)             | 9 (13.2)                 | 23 (33.8)                  | NA            | 3 (4.4)             | 26 (55.3)              | 10 (21.3)                | 11 (23.4)                  | NA            | 0                   |
| Prescribe physical exercise   | 51 (75.0)             | 0                        | 15 (22.1)                  | NA            | 2 (2.9)             | 38 (80.9)              | 2 (4.3)                  | 6 (12.8)                   | NA            | 1 (2.1)             |
| Prescribe physical therapy (muscular reinforcement)                     | 27 (39.7)             | 9 (13.2)                 | 29 (42.7)                  | NA            | 3 (4.4)             | 27 (57.5)              | 7 (14.9)                 | 13 (27.7)                  | NA            | 0                   |
| Prescribe adapted shoes   | 18 (26.5)             | 8 (11.8)                 | 40 (58.8)                  | NA            | 2 (2.9)             | 13 (27.7)              | 8 (17.0)                 | 25 (53.2)                  | NA            | 1 (2.1)             |
| Consider calcium and vitamin D prescription                             | 45 (66.2)             | 1 (1.5)                  | 14 (20.6)                  | 6 (8.8)       | 2 (2.9)             | 29 (61.7)              | 2 (4.3)                  | 9 (19.2)                   | 6 (12.8)      | 1 (2.1)             |
| Motivational intervention on alcohol consumption                        |                       |                          |                            | 68 (100.0)    |                     |                        |                          |                            | 47 (100.0)    |                     |



| <b>Osteoporosis</b>  | Done at 1 year (N=106) | Not done, patient reason | Not done, physician reason | Not indicated | Missing information | Done at 2 years (N=78) | Not done, patient reason | Not done, physician reason | Not indicated | Missing information |
|--|------------------------|--------------------------|----------------------------|---------------|---------------------|------------------------|--------------------------|----------------------------|---------------|---------------------|
| <b>Perform osteodensitometry</b>   | 30 (28.3)              | 15 (14.2)                | 59 (55.7)                  | NA            | 2 (1.9)             | 22 (28.2)              | 9 (11.5)                 | 45 (57.7)                  | NA            | 2 (2.6)             |
| Prescribe physical exercise  | 40 (37.7)              | 8 (7.6)                  | 0                          | NA            | 58 (54.7)           | 26 (33.3)              | 2 (2.6)                  | 2 (2.6)                    | NA            | 48 (61.5)           |
| Prescribe physical therapy (muscular reinforcement)  | 23 (21.7)              | 9 (8.5)                  | 16 (15.1)                  | NA            | 58 (54.7)           | 18 (23.1)              | 6 (7.7)                  | 6 (7.7)                    | NA            | 48 (61.5)           |
| Consider calcium & Vitamin D prescription  | 37 (34.9)              | 1 (0.9)                  | 7 (6.6)                    | 3 (2.8)       | 58 (54.7)           | 22 (28.2)              | 2 (2.6)                  | 3 (3.9)                    | 3 (3.9)       | 48 (61.5)           |
| Consider specific treatment (biphosphonates, denosumab; others according to specialist advice) | 18 (17.0)              | 11 (10.4)                | 52 (49.1)                  | 21 (19.8)     | 4 (3.8)             | 18 (23.1)              | 5 (6.4)                  | 37 (47.4)                  | 16 (20.5)     | 2 (2.6)             |
| <b>Undernutrition</b>  | Done at 1 year (N=6)   | Not done, patient reason | Not done, physician reason | Not indicated | Missing information | Done at 2 years (N=3)  | Not done, patient reason | Not done, physician reason | Not indicated | Missing information |
| Perform digestive (including constipation) examination   | 6 (100.0)              | 0                        | 0                          | NA            | 0                   | 2 (66.7)               | 0                        | 1 (33.3)                   | NA            | 0                   |
| Perform dental examination   | 4 (66.7)               | 0                        | 2 (33.3)                   | NA            | 0                   | 0                      | 0                        | 3 (100.0)                  | NA            | 0                   |
| Assess financial situation   | 6 (100.0)              | 0                        | 0                          | NA            | 0                   | 0                      | 0                        | 3 (100.0)                  | NA            | 0                   |
| <b>Consider dietetic advice</b>  | 0                      | 1 (16.7)                 | 0                          | 5 (83.3)      | 0                   | 0                      | 1 (33.3)                 | 2 (66.7)                   | 0             | 0                   |
| <b>Review home care support (incl ergotherapy)</b>   | 2 (33.3)               | 1 (16.7)                 | 0                          | 3 (50.0)      | 0                   | 0                      | 0                        | 2 (66.7)                   | 1 (33.3)      | 0                   |
| <b>Treat other causes (e.g. depression, digestive disorder)</b>                                | 1 (16.7)               | 0                        | 1 (16.7)                   | 4 (66.7)      | 0                   | 1 (33.3)               | 0                        | 0                          | 2 (66.7)      | 0                   |
| <b>Review meals organization (shopping, cooking, feeding)</b>                                  | 4 (66.7)               | 0                        | 2 (33.3)                   | NA            | 0                   | 1 (33.3)               | 0                        | 2 (66.7)                   | 0             | 0                   |
| Encourage snacks   | 3 (50.0)               | 0                        | 3 (50.0)                   | NA            | 0                   | 2 (66.7)               | 0                        | 1 (33.3)                   | 0             | 0                   |
| <b>Consider hyperproteic supplements</b>   | 2 (33.3)               | 0                        | 2 (33.3)                   | 2 (33.3)      | 0                   | 0                      | 1 (33.3)                 | 1 (33.3)                   | 1 (33.3)      | 0                   |