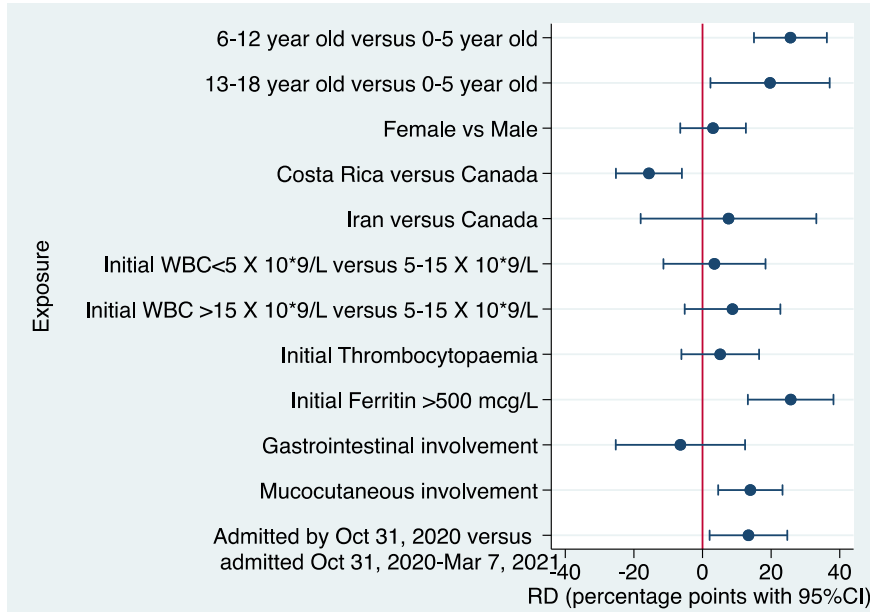


Supplementary Figure 4 - Risk of critical disease (defined as intensive care unit admission with need for vasopressors and/ or non-invasive or mechanical ventilation) in 232 children admitted to hospital with MIS-C



Legend: Association exposures on admission and admission on the ICU with the need for vasopressors or ventilation. Average marginal effects are presented with adjusted RDs from multivariable logistic regressions. The reference used for RDs are absence of the symptom or the reported category. Models are adjusted for sex, age, country, presence of comorbidity, coinfection, treatment, confirmed case status and admission time.