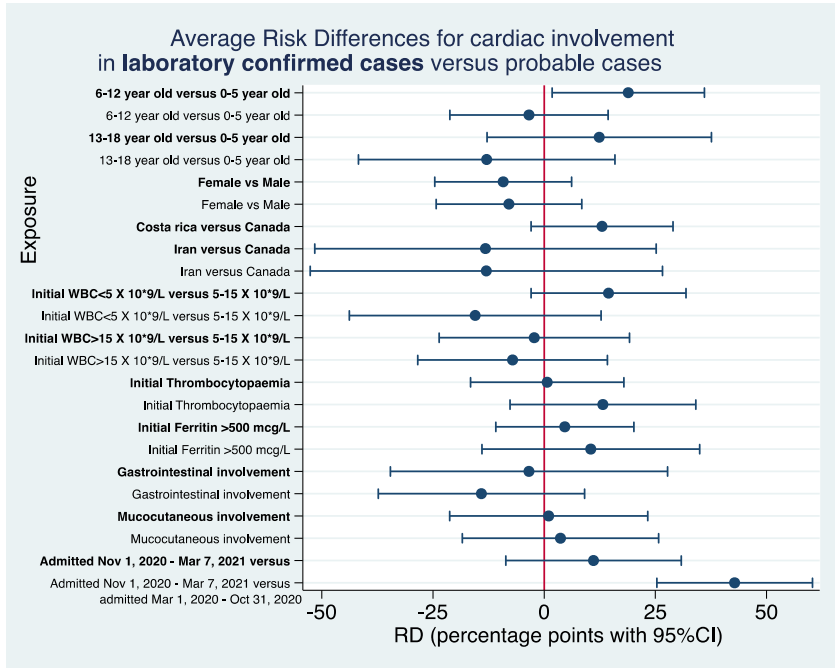


Supplementary Figure 6 – Cardiac involvement stratified analysis in 106 confirmed and 126 probable cases of children admitted to hospital with MIS-C



Methodological note: Differences between the groups (confirmed versus probable) are not estimated and their difference cannot be purely inferred by comparison of the stratum specific estimates to the null (cf Gelman A, Stern H. The difference between “significant” and “not significant” is not itself statistically significant. *Am Stat* 2006; 60:328–331.) It also needs to be recognized that uncertainty is high (cf. wide confidence intervals), due to small sample sizes of the stratified groups.